

### HERRAMIENTA DE COMPRESIÓN PARA CONECTORES «F» «F» CONNECTORS COMPRESSION TOOL

Ref. 216303 (KPZ)



<https://qr.televes.com/A90973>



#### Descripción del producto

Herramienta fabricada en metal, incorporando doble compuesto (plástico+goma) en la zona de sujeción, para mejorar su agarre. Incluye sistema de desbloqueo para cuando el recorrido del conector no permite alcanzar el cierre completo de la herramienta.

#### Product description

*Tool made of metal, incorporating double compound (plastic+rubber) in the clamping area, to improve its grip. It includes an unlocking system for when the connectors path does not allow the tool to be completely closed.*

#### Configuraciones típicas de la herramienta

#### Typical tool configurations

Ref. 4104 / 4105 / 410801



Ref. 4104 / 4105 / 410801  
410701 / 410901



Otros conectores  
Other connectors



1. Calibrador para conectores / Calibrator for connectors
2. Bloqueo de seguridad / Security lock

## RG 6 - RG59, T100, CXT

Conectores 4104, 4105 y 410801

Connectors 4104, 4105 & 410801



Ref. 4104

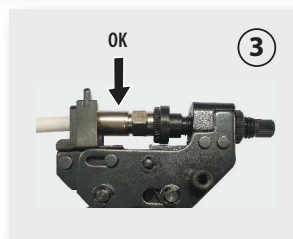
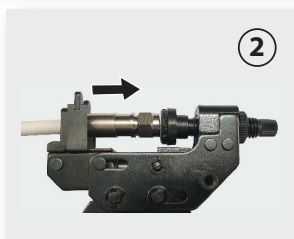
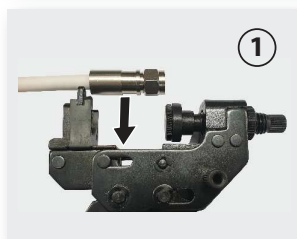


Ref. 4105



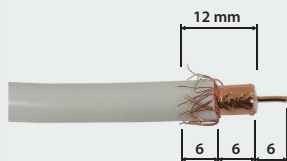
Ref. 410801

\* Se recomienda el uso de la ref. 216310 para facilitar la inserción del conector en el cable.  
The use of ref. 216310 is recommended to facilitate the insertion of the connector in the cable.



Conectores 410701 y 410901

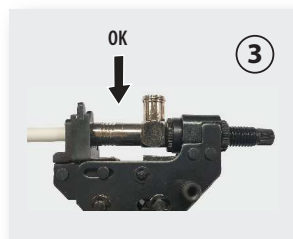
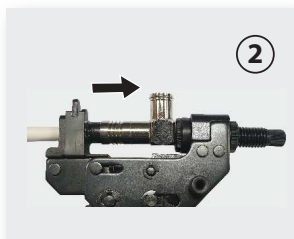
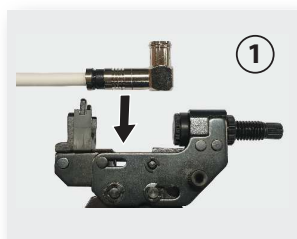
Connectors 410701 & 410901



Ref. 410701 \*\*



Ref. 410901 \*\*



\*\* Ambos conectores precisarán la liberación manual de la herramienta.  
Both connectors will require manual release of the tool.

