



Upper section 1m, Zinc + RCP 180 tower

1 m upper section for the erection of a 180 SE tower.

Ref.	3021
Logical ref.	TOBER180-1
EAN13	8424450136324

Other features

Colour	Grey
Finishing	Zinc + RCP

Packaging info

Unit	1 pcs.
-------------	--------

Physical data

Photo with dimensions	3.00
Net weight	3,366.00 g
Gross weight	3,366.00 g
Width	180.00 mm
Height	995.00 mm
Depth	156.00 mm
Main product weight	3,366.00 g

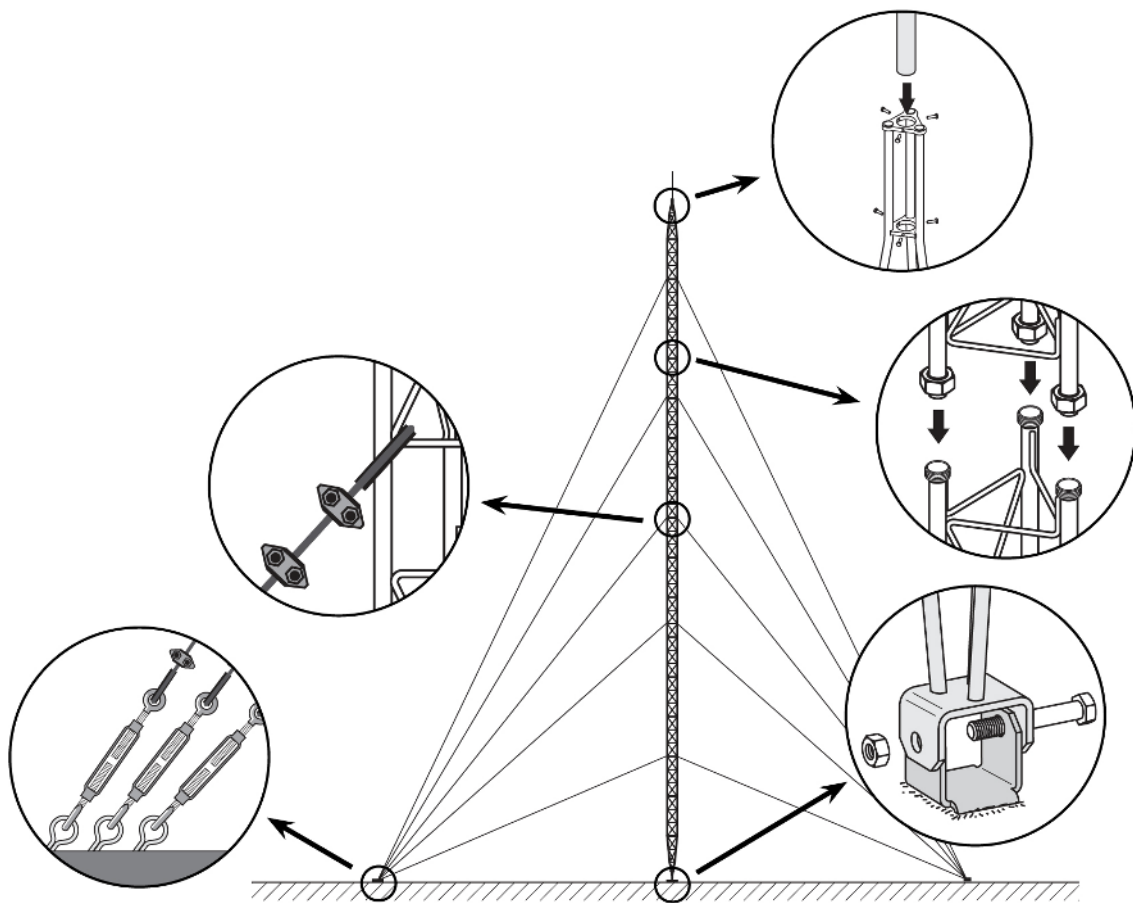
Highlights

- Anchoring system with union nuts
- Easy and quick mounting
- Fully automated soldering

- 180 tower maximum height: 26.5m (as per calculation conditions)
- Zinc coating + RCP
- Grey finish
- Mast max. diameter: 46 mm
- Main tubes of 20*2 mm and transverse rods of 6 mm

Mounting details

It consists in fixing the lower section to the base, set it in upright position and levelling it. The subsequent Middle Sections are then mounted, equipped with the appropriate guy wires; the mounting is carried out by climbing on the previously mounted sections and hoisting the new section with the help of the appropriate lifting tools.



Technical specifications : Ref. 3021

Surface facing the wind	m ²	0.046
-------------------------	----------------	-------