



Upper section 3m, Zinc + RCP 180 tower

3 m upper section for the erection of a 180 tower.

Ref.	3032
Logical ref.	TOBER180
EAN13	8424450136577

Other features

Colour	Grey
Finishing	Hot-Dip Galvanizing

Packaging info

Unit	1 pcs.
-------------	--------

Physical data

Photo with dimensions	3.00
Net weight	11,000.00 g
Gross weight	11,000.00 g
Width	225.00 mm
Height	3,010.00 mm
Depth	225.00 mm
Main product weight	11,019.00 g

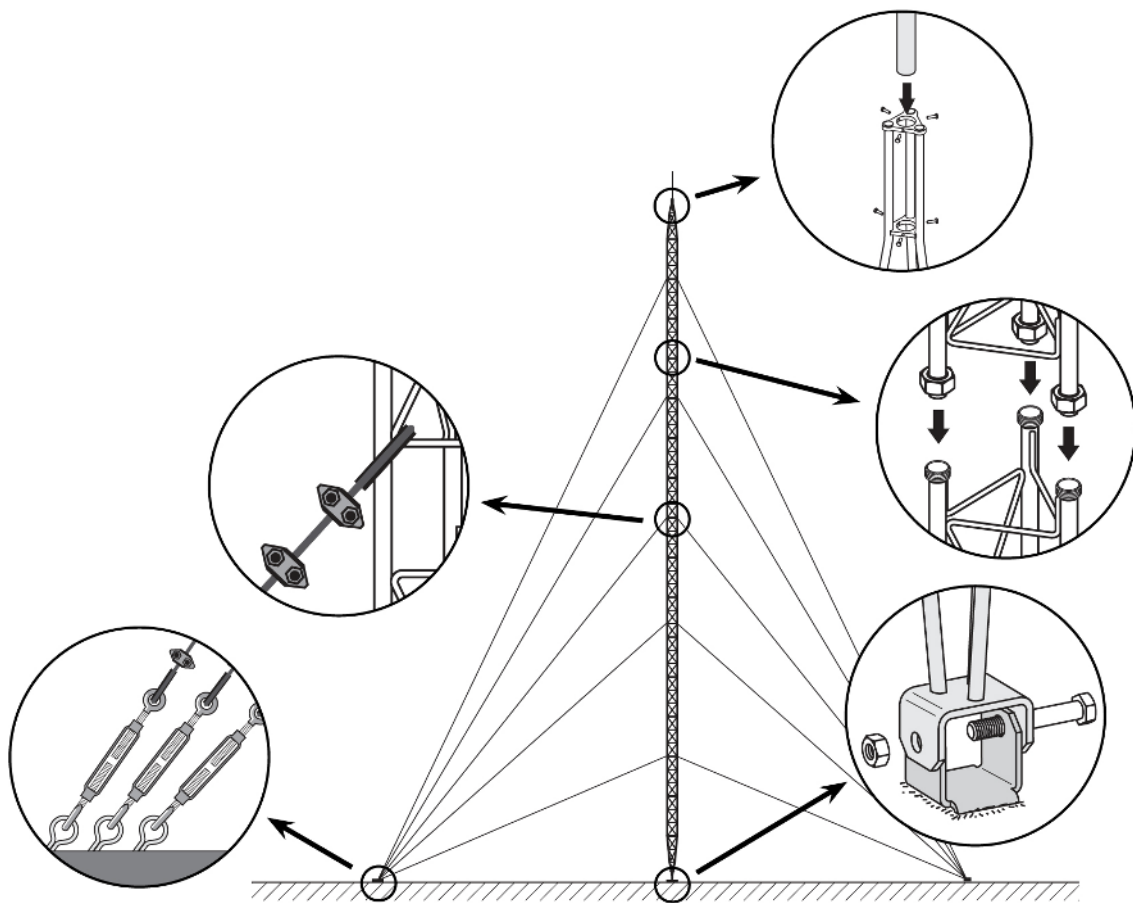
Highlights

- Anchoring system with union nuts
- Easy and quick mounting
- Fully automated soldering

- 180 tower maximum height: 26.5 m (as per calculation conditions)
- Zinc coating + RCP
- Grey finish
- Mast max. diameter: 46 mm
- Main tubes of 20*2 mm and transverse rods of 6 mm

Mounting details

It consists in fixing the lower section to the base, set it in upright position and levelling it. The subsequent Middle Sections are then mounted, equipped with the appropriate guy wires; the mounting is carried out by climbing on the previously mounted sections and hoisting the new section with the help of the appropriate lifting tools.



Technical specifications : Ref. 3032

Surface facing the wind	m ²	0.272
-------------------------	----------------	-------