

Upper section, Zinc + RCP 360 tower

3 m upper section for the erection of a 360 series tower.

Ref.	3085
Logical ref.	TOBER360
EAN13	8424450136652

Other features

Colour	Grey
Finishing	Zinc + RCP

Packaging info

Unit	1 pcs.
-------------	--------

Physical data

Photo with dimensions	3.00
Net weight	23,000.00 g
Gross weight	23,000.00 g
Width	375.00 mm
Height	2,962.00 mm
Depth	325.00 mm
Main product weight	19,219.00 g

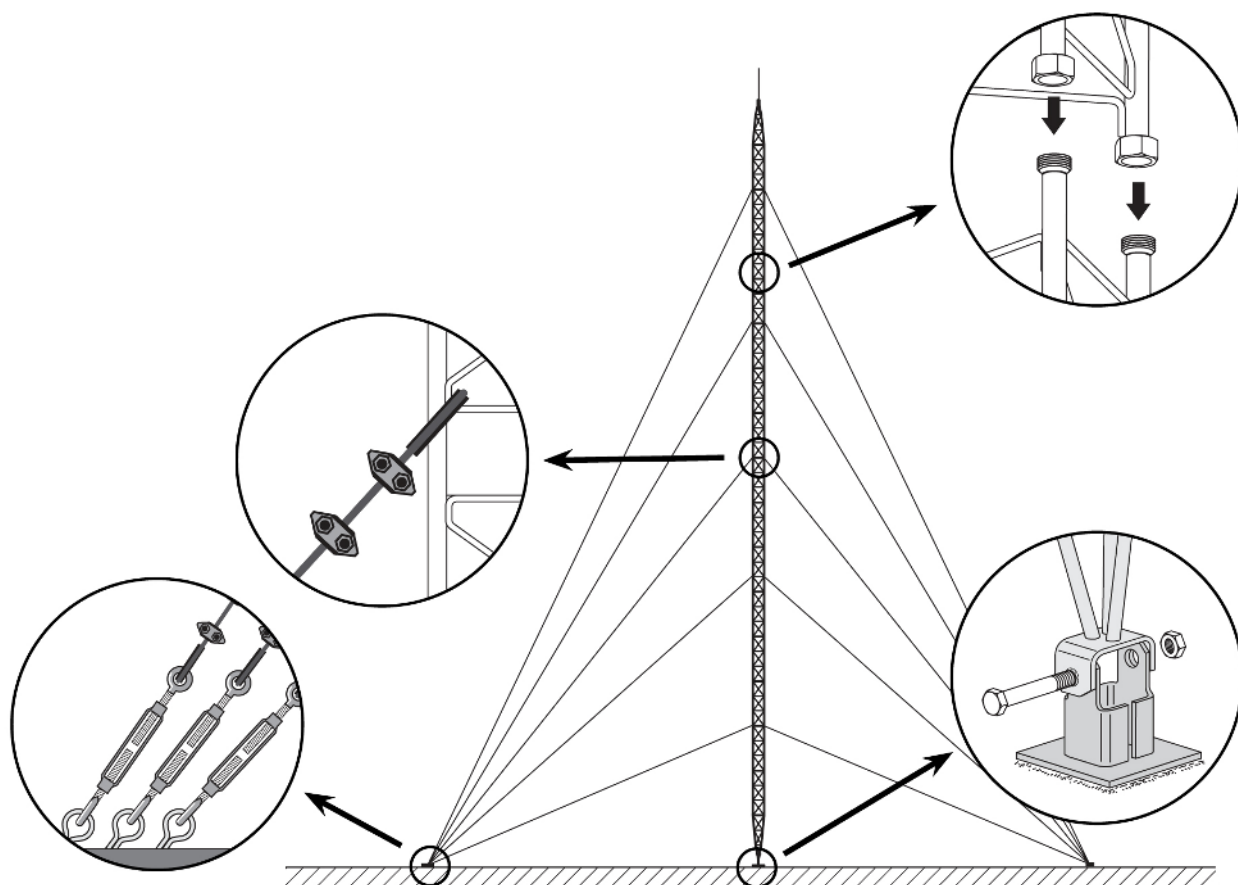
Highlights

- Anchoring system with union nuts
- Fully automated soldering
- 360 tower maximum height: 57 m (as per calculation conditions)

- Zinc coating + RCP
- Grey finish
- Mast max. diameter: 52 mm

Mounting details

It consists in fixing the lower section to the base, set it in upright position and levelling it. The subsequent Middle Sections are then mounted, equipped with the appropriate guy wires; the mounting is carried out by climbing on the previously mounted sections and hoisting the new section with the help of the appropriate lifting tools.



Technical specifications : Ref. 3085

Surface facing the wind	m ²	0.4
-------------------------	----------------	-----