

Lower section pivoting, Zinc + RCP 360 tower

3m lower section pivoting for the erection of a 360 series tower.

Guy wires are required for pivoting sections.

Ref.	3086
Logical ref.	TFUSS360
EAN13	8424450136683

Other features

Colour	Grey
Finishing	Zinc + RCP

Packaging info

Unit	1 pcs.
-------------	--------

Physical data

Photo with dimensions	3.00
Net weight	23,000.00 g
Gross weight	23,000.00 g
Width	375.00 mm
Height	3,070.00 mm
Depth	325.00 mm
Main product weight	21,989.00 g

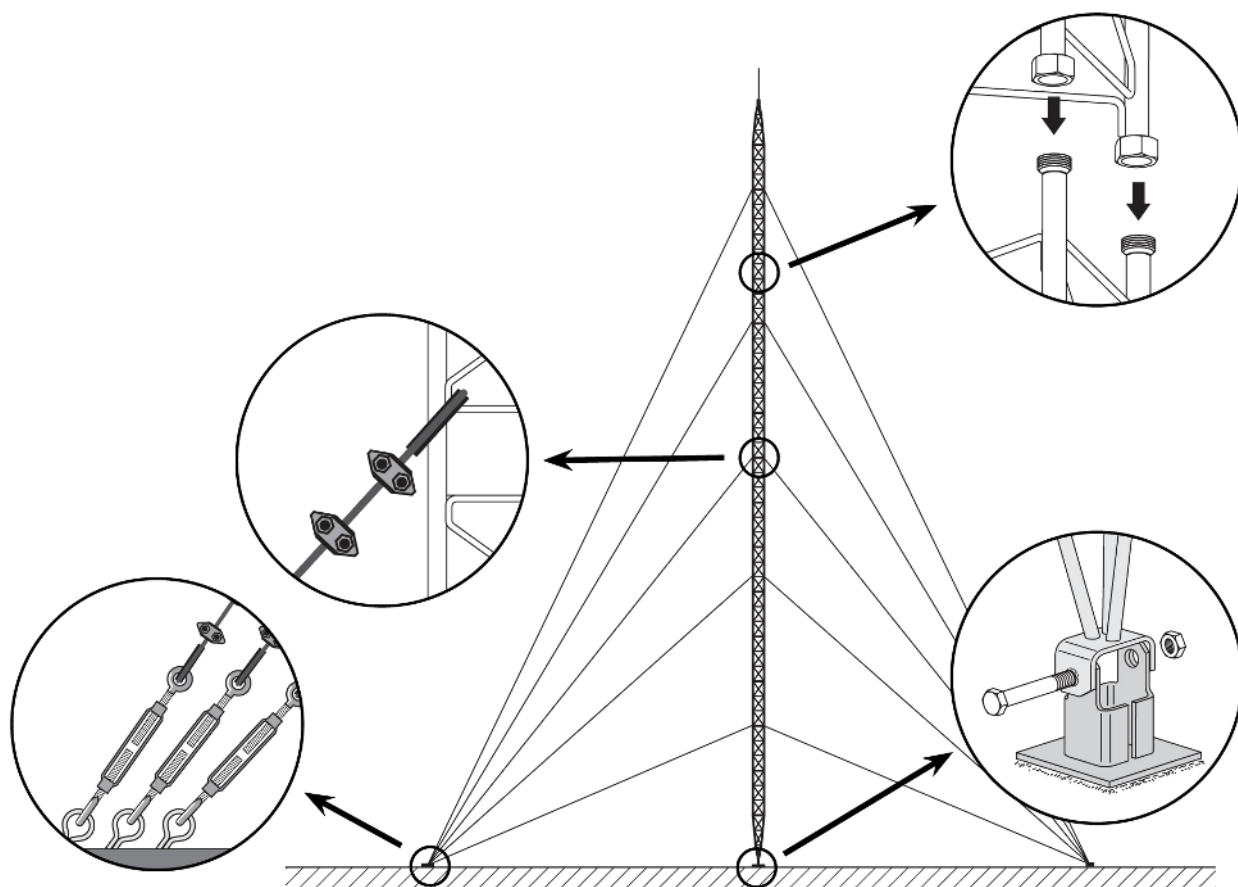
Highlights

- Anchoring system with union nuts
- Fully automated soldering
- 360 tower maximum height: 57m (as per calculation conditions)

- Zinc coating + RCP
- Grey finish

Mounting details

It consists in fixing the lower section to the base, set it in upright position and levelling it. The subsequent Middle Sections are then mounted, equipped with the appropriate guy wires; the mounting is carried out by climbing on the previously mounted sections and hoisting the new section with the help of the appropriate lifting tools.



Technical specifications : Ref. 3086

Surface facing the wind	m ²	0.426
-------------------------	----------------	-------