

Middle Section, Zinc + RCP 360 tower

3m Middle Section for the erection of a 360 series tower.

| | |
|---------------------|---------------|
| Ref. | 3087 |
| Logical ref. | TMIT360 |
| EAN13 | 8424450136690 |

Other features

| | |
|------------------|------------|
| Colour | Grey |
| Finishing | Zinc + RCP |

Packaging info

| | |
|-------------|--------|
| Unit | 1 pcs. |
|-------------|--------|

Physical data

| | |
|------------------------------|-------------|
| Photo with dimensions | 3.00 |
| Net weight | 23,000.00 g |
| Gross weight | 23,000.00 g |
| Width | 390.00 mm |
| Height | 3,020.00 mm |
| Depth | 338.00 mm |
| Main product weight | 21,815.00 g |

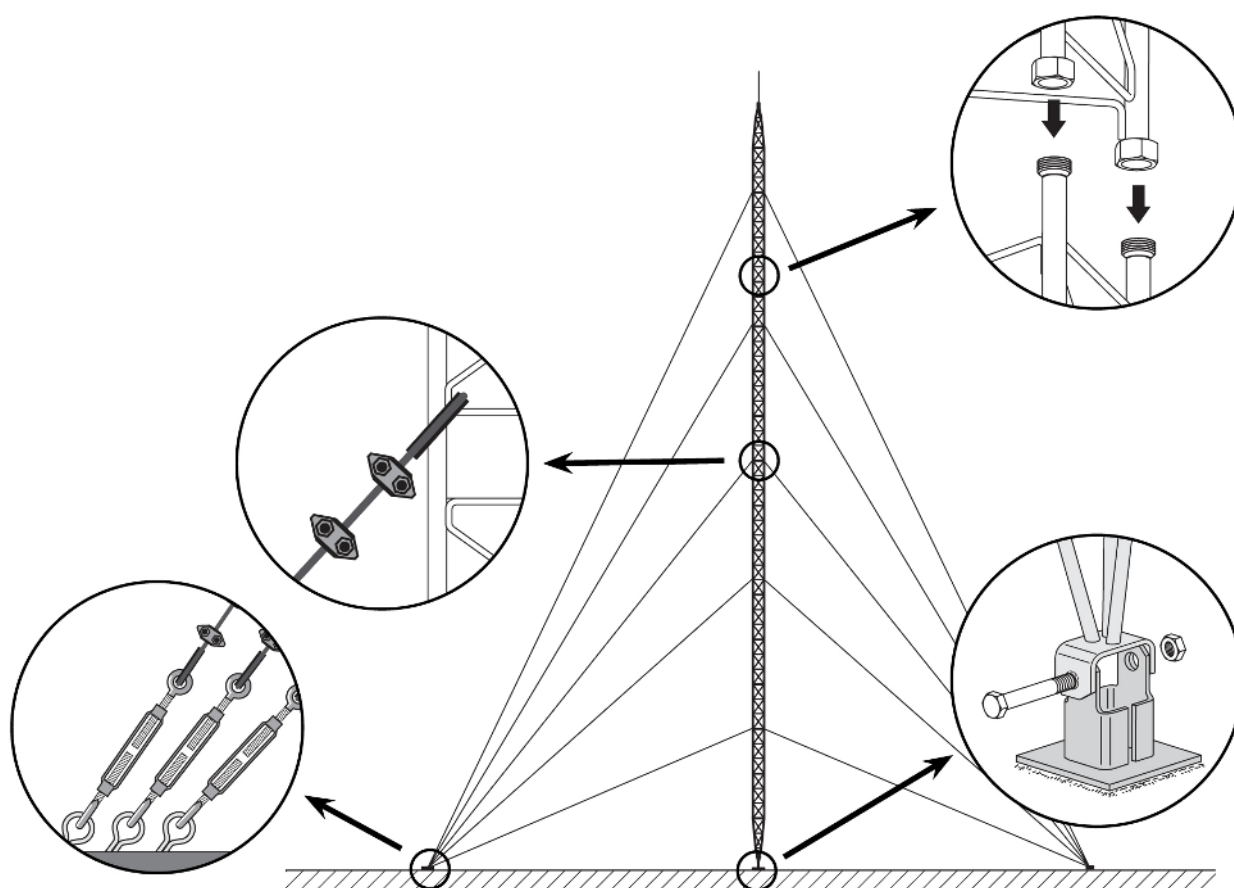
Highlights

- Anchoring system with union nuts
- Fully automated soldering
- 360 tower maximum height: 57m (as per calculation conditions)

- Zinc coating + RCP
- Grey finish

Mounting details

It consists in fixing the lower section to the base, set it in upright position and levelling it. The subsequent Middle Sections are then mounted, equipped with the appropriate guy wires; the mounting is carried out by climbing on the previously mounted sections and hoisting the new section with the help of the appropriate lifting tools.



Technical specifications : Ref. 3087

| | | |
|-------------------------|----------------|-------|
| Surface facing the wind | m ² | 0.438 |
|-------------------------|----------------|-------|