

## Upper section, Hot-Dip Galvanizing + Painting 450 tower

3 m upper section for the erection of a 450 series tower.

The section is painted red (RAL 3020).

<b>Ref.</b>	3133
<b>Logical ref.</b>	TOBER450R
<b>EAN13</b>	8424450136836

### Other features

<b>Colour</b>	Red
<b>Finishing</b>	Zinc + Red painted

### Packaging info

<b>Unit</b>	1 pcs.
-------------	--------

### Physical data

<b>Photo with dimensions</b>	3.00
<b>Net weight</b>	35,000.00 g
<b>Gross weight</b>	35,000.00 g
<b>Width</b>	515.00 mm
<b>Height</b>	2,947.00 mm
<b>Depth</b>	446.00 mm
<b>Main product weight</b>	34,432.00 g

### Highlights

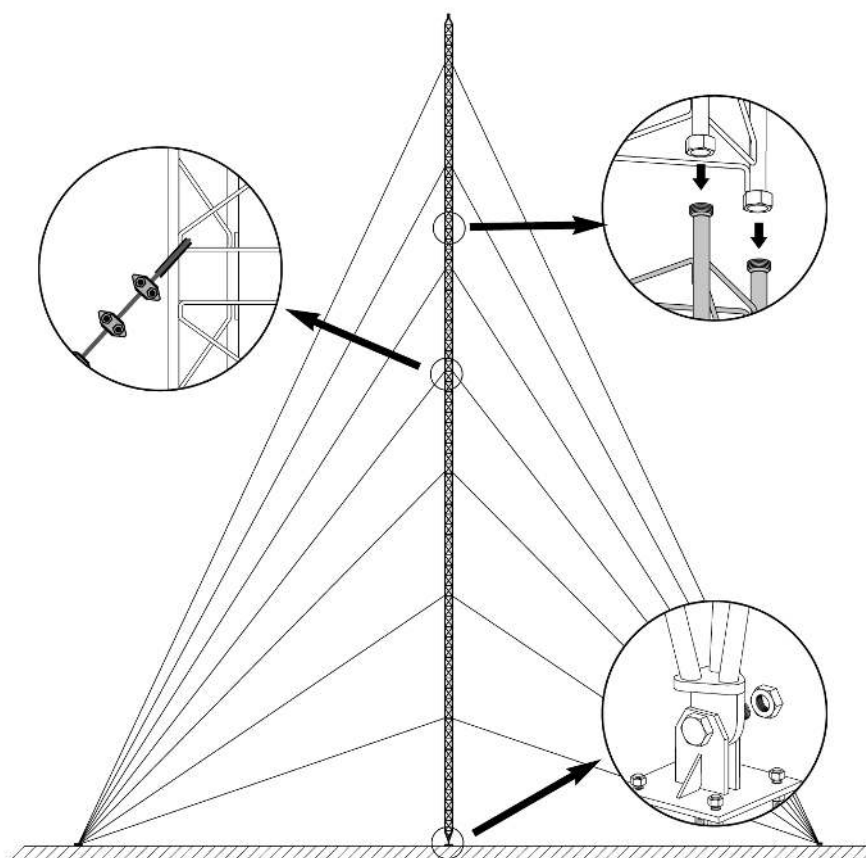
- Anchoring system with union nuts
- Fully automated soldering
- 450 tower maximum height: 90 m (as per calculation conditions)

- The hot-dip galvanizing surface treatment provides enhanced durability in adverse corrosion conditions
- Colour paint, oven-lacquering with polyester electrostatic powder
- Mast max. diameter: 62 mm

## Mounting details

---

It consists in fixing the lower section to the base, set it in upright position and levelling it. The subsequent Middle Sections are then mounted, equipped with the appropriate guy wires; the mounting is carried out by climbing on the previously mounted sections and hoisting the new section with the help of the appropriate lifting tools.



## Technical specifications : Ref. 3133

Surface facing the wind	m <sup>2</sup>	0.518
-------------------------	----------------	-------