

Upper section, Hot-Dip Galvanizing + Painting 450 tower

3 m upper section for the erection of a 450 series tower.

The section is painted red (RAL 3020).

| | |
|---------------------|---------------|
| Ref. | 3133 |
| Logical ref. | TOBER450R |
| EAN13 | 8424450136836 |

Other features

| | |
|------------------|--------------------|
| Colour | Red |
| Finishing | Zinc + Red painted |

Packaging info

| | |
|-------------|--------|
| Unit | 1 pcs. |
|-------------|--------|

Physical data

| | |
|------------------------------|-------------|
| Photo with dimensions | 3.00 |
| Net weight | 35,000.00 g |
| Gross weight | 35,000.00 g |
| Width | 515.00 mm |
| Height | 2,947.00 mm |
| Depth | 446.00 mm |
| Main product weight | 34,432.00 g |

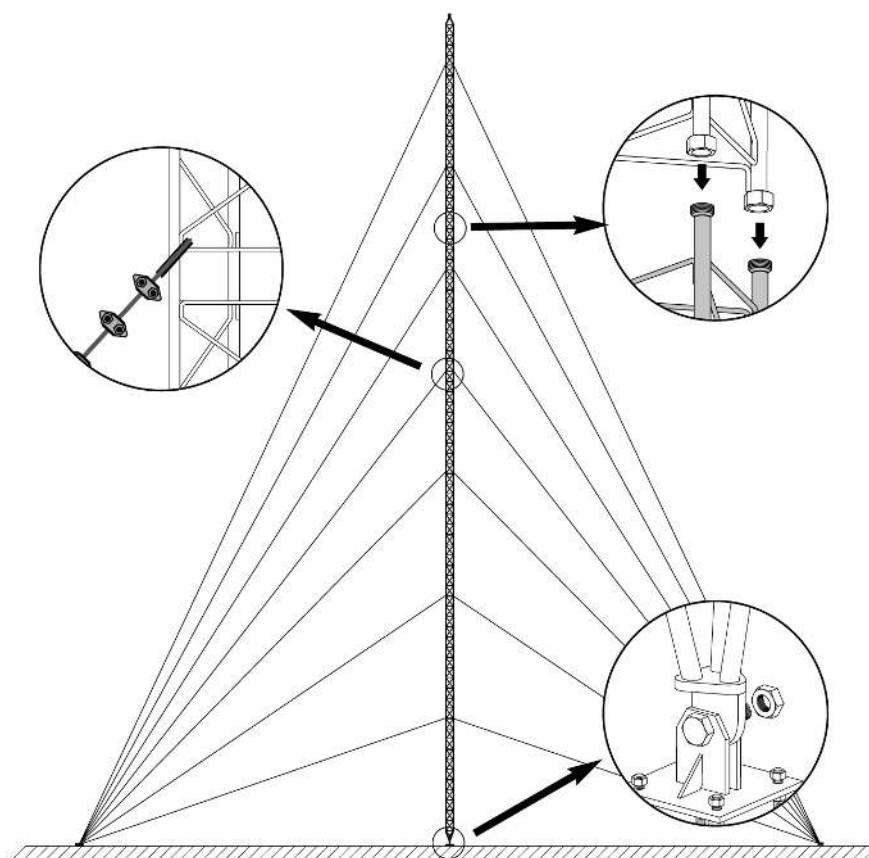
Highlights

- Anchoring system with union nuts
- Fully automated soldering
- 450 tower maximum height: 90 m (as per calculation conditions)

- The hot-dip galvanizing surface treatment provides enhanced durability in adverse corrosion conditions
- Colour paint, oven-lacquering with polyester electrostatic powder
- Mast max. diameter: 62 mm

Mounting details

It consists in fixing the lower section to the base, set it in upright position and levelling it. The subsequent Middle Sections are then mounted, equipped with the appropriate guy wires; the mounting is carried out by climbing on the previously mounted sections and hoisting the new section with the help of the appropriate lifting tools.



Technical specifications : Ref. 3133

| | | |
|-------------------------|----|-------|
| Surface facing the wind | m² | 0.518 |
|-------------------------|----|-------|