



## F.O. Patch Box pre-terminated with dispenser box 4 SC/APC outputs

Device enabled as a connection point to an optical fiber network. In communications infrastructures, it works as a cut-off and test point for the optical fiber network. The patch box includes Cca fiber, so it is recommended for installation in singular buildings (airports, hospitals, shopping centres, schools, universities), which require high levels of safety due to their large concurrence of people. Euroclass Cca guarantees an adequate level of safety in terms of reaction to fire and emission of toxic fumes, reducing the risks derived from a fire. It incorporates optical fiber with one end pre-connectorised on the Patch Box, with 4 SC/APC connectors. This provides the installer with greater convenience and agility in assembly, allowing the fiber to pass through the different conduits to the desired point. The installer only has to do the fusion or connection 4 FO connectors at the connection point. Moreover, the fiber is delivered in a dispenser box with a reel inside, which significantly facilitates the deployment of the cable, reducing installation time and the risk of damage to the fiber.

The design also allows installation in other types of premises (car repair shops, classrooms, work tables, wiring cabinets, etc.) and use as a connection point.

---

Ref. 231536

---

<b>Logical ref.</b>	OB4-4-100
<b>EAN13</b>	8424450187012

## Other features

<b>Length</b>	100.00 m
---------------	----------

## Packaging info

<b>Box</b>	1 pcs.
------------	--------

## Physical data

<b>Net weight</b>	826.00 g
-------------------	----------

<b>Gross weight</b>	826.00 g
---------------------	----------

<b>Width</b>	119.00 mm
--------------	-----------

<b>Height</b>	94.00 mm
---------------	----------

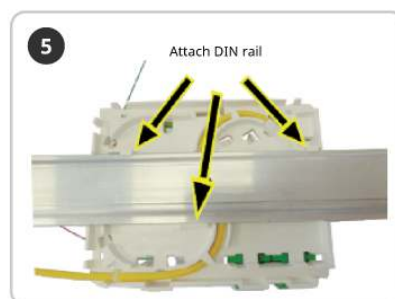
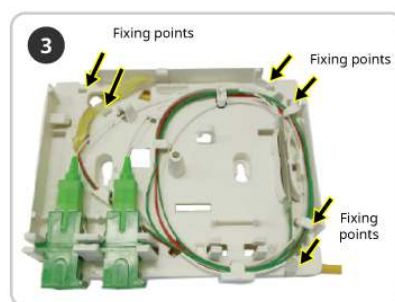
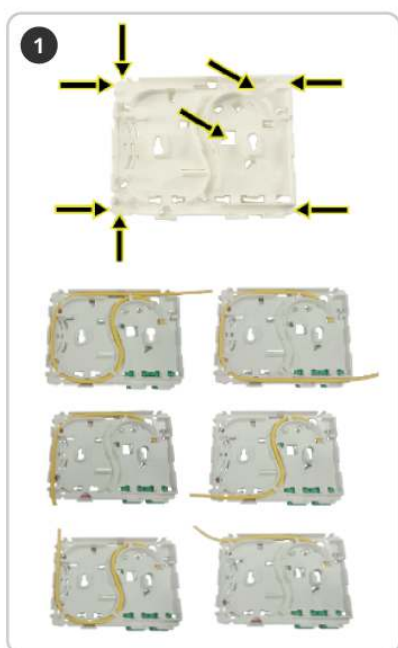
<b>Depth</b>	34.00 mm
--------------	----------

## Highlights

- Made of robust ABS plastic. White color (RAL 9003)
- With a capacity of up to 4 SC/APC output connectors
- Equipped with ITU-T G657A2 single-mode fibers and Cca Euroclass
- Equipped with 4 Simplex Single-Mode "SC/APC" female-to-"SC/APC" female adapters (with self-locking cover)
- Multi-anchoring system: Standard DIN rail, wall or outlet
- Single direction of rotation of the fibers inside (which facilitates installation)
- Identifying label
- 6 inputs, pre-cut on its sides, for FO access
- Back input for FO and SC connector
- Pre-cut input at the bottom, for access to a distribution frame (SC/APC)
- Equipped with: 4 heat-shrink sleeves, 2 cable ties, installation screws
- 100% european quality: manufactured by Televes in Spain

## Mounting details

1. Select the most suitable entry for the fibre optic hose, maintaining a smoothly curved fibre path
2. Cut in the cover the appropriate tab to used entry
3. Fit the fibre to the Patch Box, fix it with cable ties at the anchor points and connect it to the adapters
4. Fix the Patch Box either to the wall, using the screws supplied, or to DIN by removing the pre-cut tabs on the cover



## Technical specifications : Ref. 231536

Number of fibers		4
Number of inputs		8
Closure type		Cover
Front door locking system		Screw
Type of connections		Connector and fusion splice
Installation type		Wall / Ceiling
Material		ABS Plastic
Thickness	mm	2
Colour		White
Protection index (IP)		30
Protection index (IK)		7
Height	mm	97
Width	mm	119
Depth	mm	33
Fiber core type		Single-mode (ITU-T-G.657A2)
Euroclass		Cca
Euroclass: Smoke Production		s1a
Euroclass: Flaming droplets		d1
Euroclass: Acidity		a1
Fiber core diameter	µm	125
Fiber cladding diameter	µm	250
Cable structure		Tight buffer
Outer sheath Diameter	mm	3
Outer sheath Material		LSFH
Blocking jelly		No
Attenuation 1310nm Max	dB/km	0.4
Attenuation 1550nm Max	dB/km	0.3
Attenuation 1490nm Max	dB/km	0.3
Return losses Min	dB	60
Short tension	N	220
Long tension	N	220
Structure reinforcement element		Aramid fibers
Minimum bending radius	mm	15
Operating temperature	°C	-20 ... 70