

Middle section, Zinc + Painting 180 tower

3m Middle Section for the erection of a 180 series tower.

The section is painted white.

Ref.	303102
EAN13	8424450152409

Other features

Colour	White
Finishing	Zinc + White painted

Packaging info

Unit	1 pcs.
-------------	--------

Physical data

Net weight	11,227.00 g
Gross weight	12,900.00 g
Width	180.00 mm
Height	3,010.00 mm
Depth	165.00 mm
Main product weight	11,227.00 g

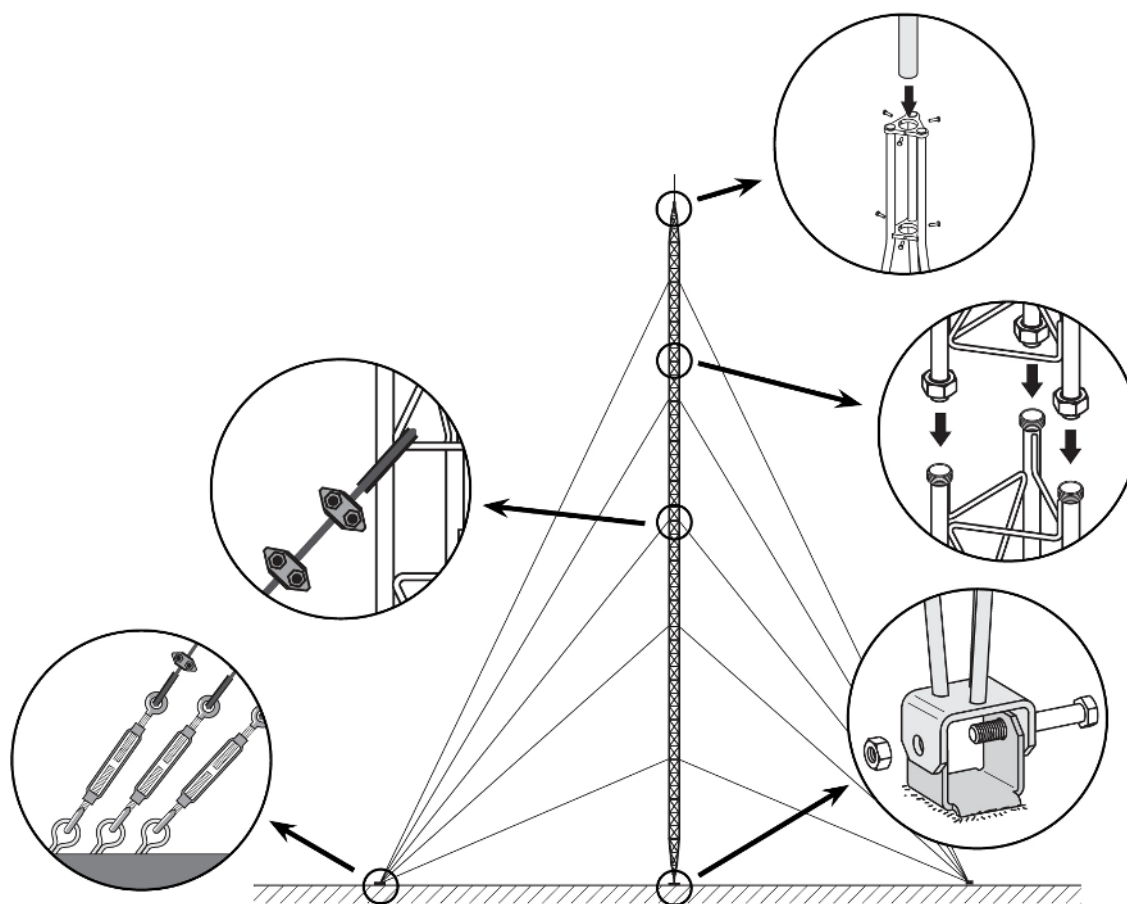
Highlights

- Anchoring system with union nuts
- Easy and quick mounting
- Fully automated soldering
- 180 tower maximum height: 26.5m (as per calculation conditions)
- Zinc coating + colour paint: oven-lacquering with polyester electrostatic powder

- Main tubes of 20*2 mm and transverse rods of 6 mm

Mounting details

It consists in fixing the lower section to the base, set it in upright position and levelling it. The subsequent Middle Sections are then mounted, equipped with the appropriate guy wires; the mounting is carried out by climbing on the previously mounted sections and hoisting the new section with the help of the appropriate lifting tools.



Technical specifications : Ref. 303102

Surface facing the wind	m ²	0.283
-------------------------	----------------	-------