

Upper section 3m, Zinc + Painting 180 tower

3m upper section for the erection of a 180 SE tower.

The section is painted white.

Ref.	303202
EAN13	8424450152393

Other features

Colour	White
Finishing	Zinc + White painted

Packaging info

Unit	1 pcs.
-------------	--------

Physical data

Net weight	11,144.00 g
Gross weight	13,200.00 g
Width	225.00 mm
Height	3,010.00 mm
Depth	225.00 mm
Main product weight	11,144.00 g

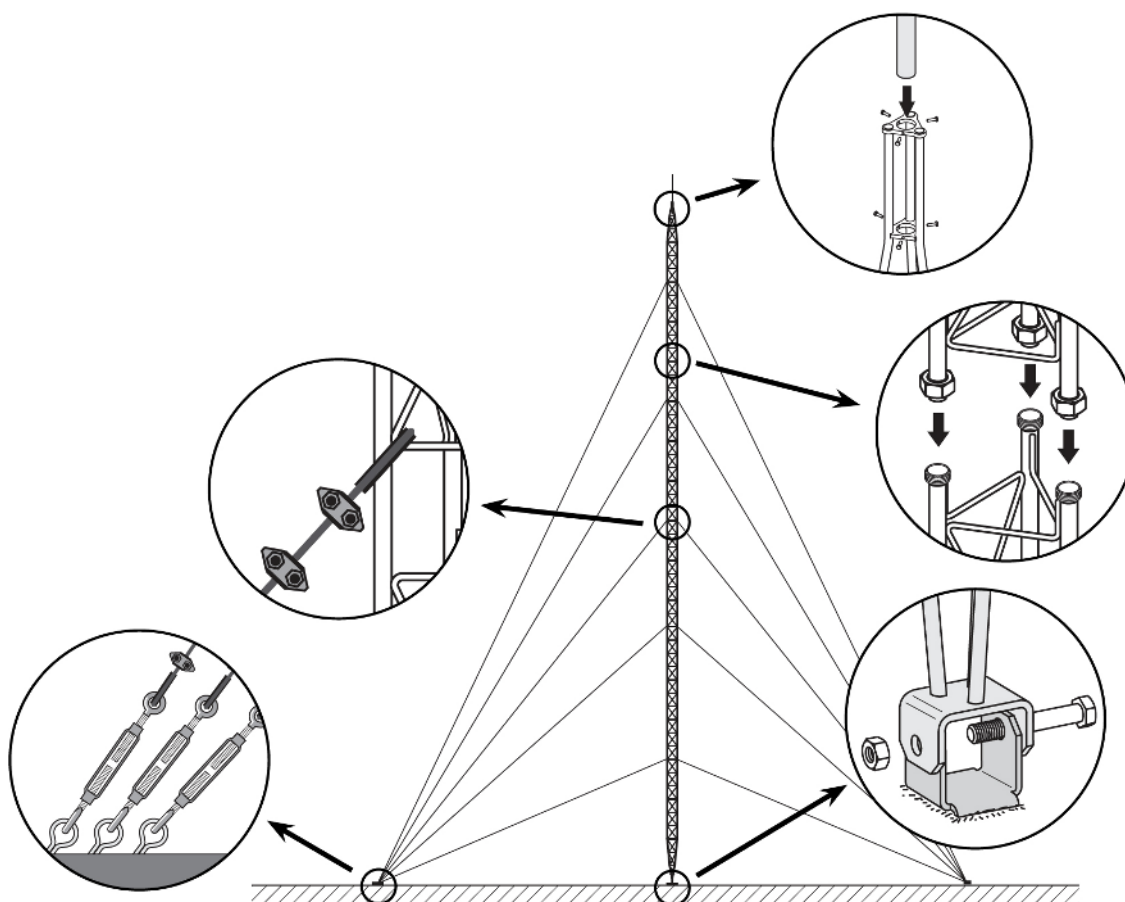
Highlights

- Anchoring system with union nuts
- Easy and quick mounting
- Fully automated soldering
- 180 tower maximum height: 26.5m (as per calculation conditions)
- Zinc coating + colour paint: oven-lacquering with polyester electrostatic powder

- Mast max. diameter: 46 mm
- Main tubes of 20*2 mm and transverse rods of 6 mm

Mounting details

It consists in fixing the lower section to the base, set it in upright position and levelling it. The subsequent Middle Sections are then mounted, equipped with the appropriate guy wires; the mounting is carried out by climbing on the previously mounted sections and hoisting the new section with the help of the appropriate lifting tools.



Technical specifications : Ref. 303202

Surface facing the wind	m ²	0.272
-------------------------	----------------	-------