

Upper section, Hot-Dip Galvanizing + Painting 360 tower

3 m upper section for the erection of a 360 series tower.

The section is painted red (RAL 3020).

Ref.	308504
Logical ref.	TOBER360FVR
EAN13	8424450169209

Other features

Colour	Red
Finishing	Hot-Dip Galvanizing

Packaging info

Unit	1 pcs.
-------------	--------

Physical data

Photo with dimensions	3.00
Net weight	23,000.00 g
Gross weight	23,000.00 g
Width	375.00 mm
Height	3,010.00 mm
Depth	325.00 mm
Main product weight	19,219.00 g

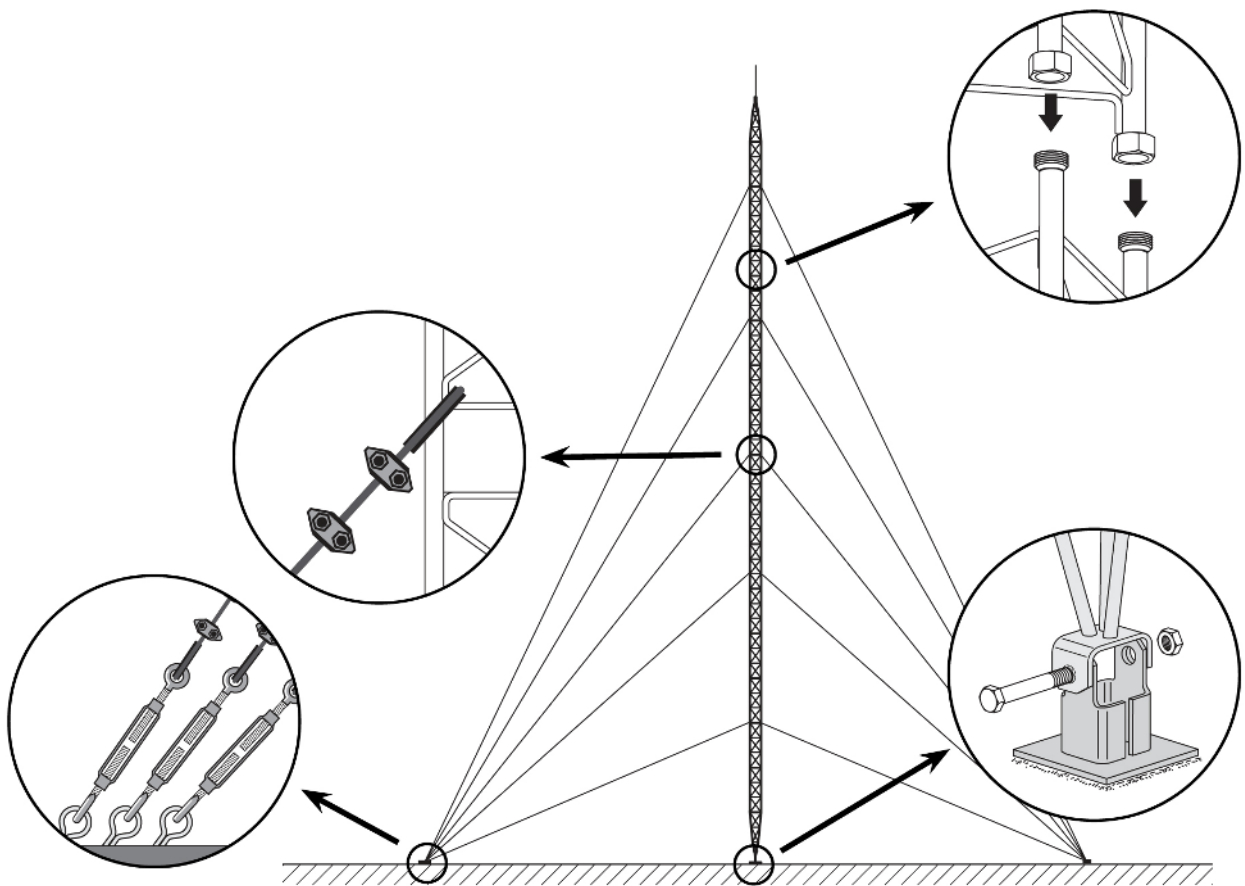
Highlights

- Anchoring system with union nuts
- Fully automated soldering
- 360 tower maximum height: 57 m (as per calculation conditions)

- The hot-dip galvanizing surface treatment provides enhanced durability in adverse corrosion conditions
- Colour paint, oven-lacquering with polyester electrostatic powder
- Mast max. diameter: 52 mm

Mounting details

It consists in fixing the lower section to the base, set it in upright position and levelling it. The subsequent Middle Sections are then mounted, equipped with the appropriate guy wires; the mounting is carried out by climbing on the previously mounted sections and hoisting the new section with the help of the appropriate lifting tools.



Technical specifications : Ref. 308504

Surface facing the wind	m ²	0.4
-------------------------	----------------	-----