

## Middle Section, Hot-galvanized 360 tower

3m Middle Section for the erection of a 360 series tower.

<b>Ref.</b>	308703
<b>Logical ref.</b>	TMIT360FV
<b>EAN13</b>	8424450169193

### Other features

<b>Colour</b>	Grey
<b>Finishing</b>	Hot-Dip Galvanizing

### Packaging info

<b>Unit</b>	1 pcs.
-------------	--------

### Physical data

<b>Photo with dimensions</b>	3.00
<b>Net weight</b>	23,000.00 g
<b>Gross weight</b>	23,000.00 g
<b>Width</b>	390.00 mm
<b>Height</b>	3,025.00 mm
<b>Depth</b>	338.00 mm
<b>Main product weight</b>	22,042.00 g

### Highlights

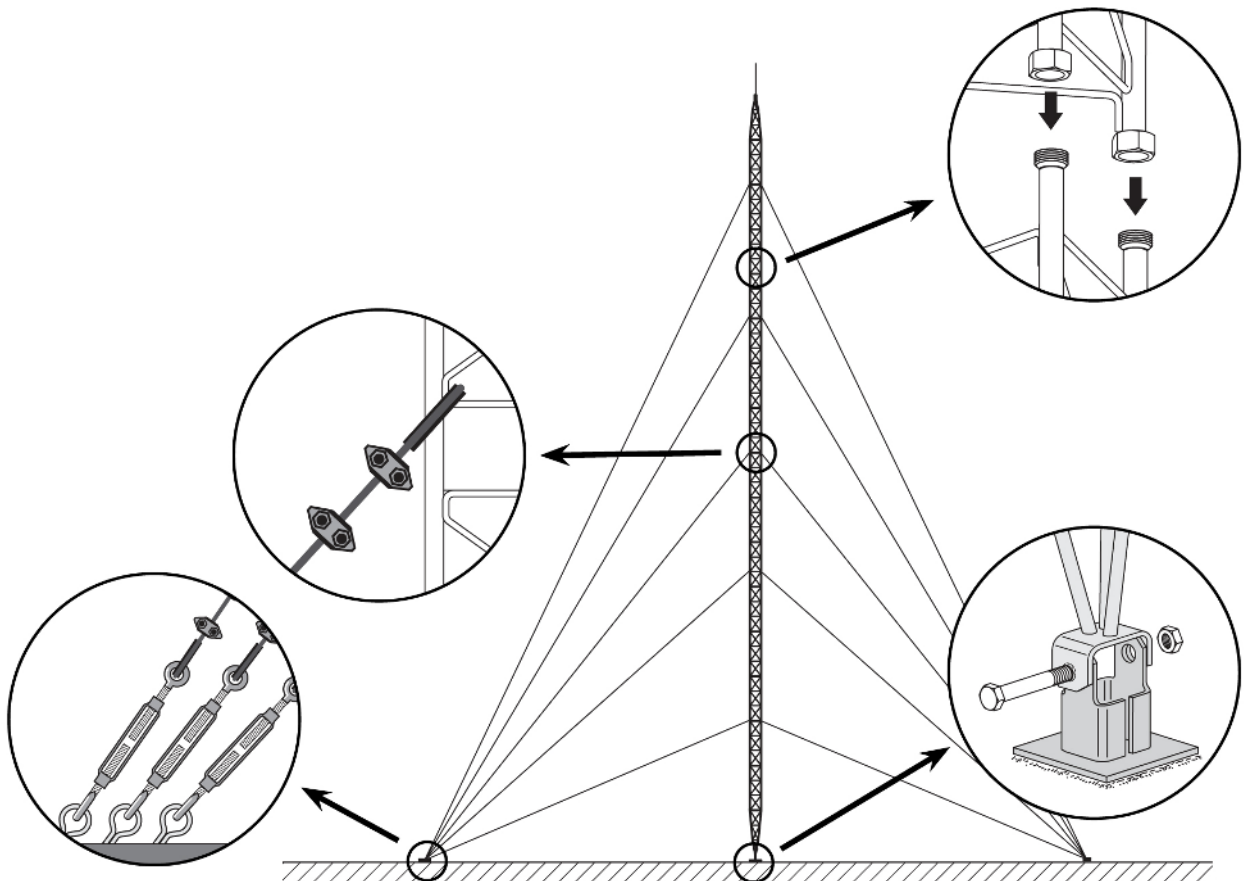
- Anchoring system with union nuts
- Fully automated soldering
- 360 tower maximum height: 57m (as per calculation conditions)

- The hot-dip galvanizing surface treatment provides enhanced durability in adverse corrosion conditions
- Grey finish

## Mounting details

---

It consists in fixing the lower section to the base, set it in upright position and levelling it. The subsequent Middle Sections are then mounted, equipped with the appropriate guy wires; the mounting is carried out by climbing on the previously mounted sections and hoisting the new section with the help of the appropriate lifting tools.



## Technical specifications : Ref. 308703

Surface facing the wind	m <sup>2</sup>	0.438
-------------------------	----------------	-------