

Upper section, Hot-Dip Galvanizing + Painting 450 tower

3 m upper section for the erection of a 450 series tower.

The section is painted red (RAL 3020).

Ref.	313301
Logical ref.	TBOER450FVR
EAN13	8424450169315

Other features

Colour	Red
Finishing	Hot-Dip Galvanizing + Red painted

Packaging info

Unit	1 pcs.
-------------	--------

Physical data

Photo with dimensions	3.00
Net weight	35,000.00 g
Gross weight	35,000.00 g
Width	515.00 mm
Height	3,015.00 mm
Depth	446.00 mm
Main product weight	34,432.00 g

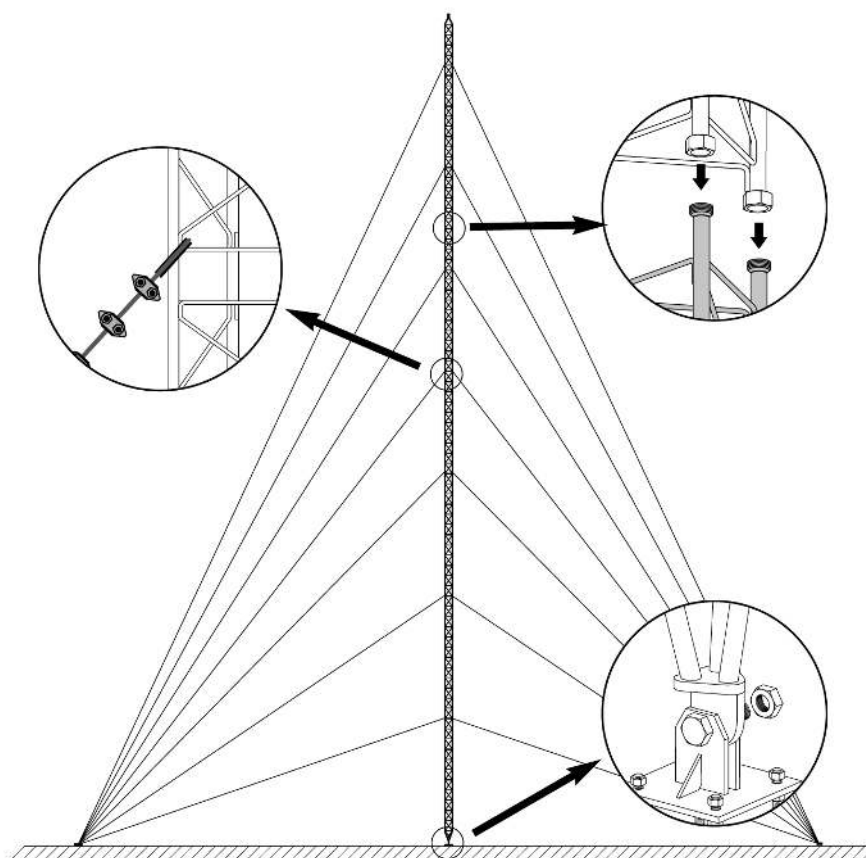
Highlights

- Anchoring system with union nuts
- Fully automated soldering
- 450 tower maximum height: 90 m (as per calculation conditions)

- The hot-dip galvanizing surface treatment provides enhanced durability in adverse corrosion conditions
- Colour paint, oven-lacquering with polyester electrostatic powder
- Mast max. diameter: 62 mm

Mounting details

It consists in fixing the lower section to the base, set it in upright position and levelling it. The subsequent Middle Sections are then mounted, equipped with the appropriate guy wires; the mounting is carried out by climbing on the previously mounted sections and hoisting the new section with the help of the appropriate lifting tools.



Technical specifications : Ref. 313301

Surface facing the wind	m ²	0.518
-------------------------	----------------	-------