



NevoSwitch 5 inputs - 12 outputs

When quality matters

Cascadable multiswitch equipped with 5 inputs (one terrestrial, and the four polarities of one satellite), 12 user outputs, and a 12 dB potentiometer per user output.

Can be used as a terminal (star topology) or as a cascade by using a simple switch.

Ref.	714504
Logical ref.	MS512C
EAN13	8424450172810

Packaging info

Box	1 pcs.
------------	--------

Physical data

Net weight	779.00 g
Gross weight	779.00 g
Width	137.00 mm
Height	255.00 mm
Depth	29.00 mm
Main product weight	771.00 g

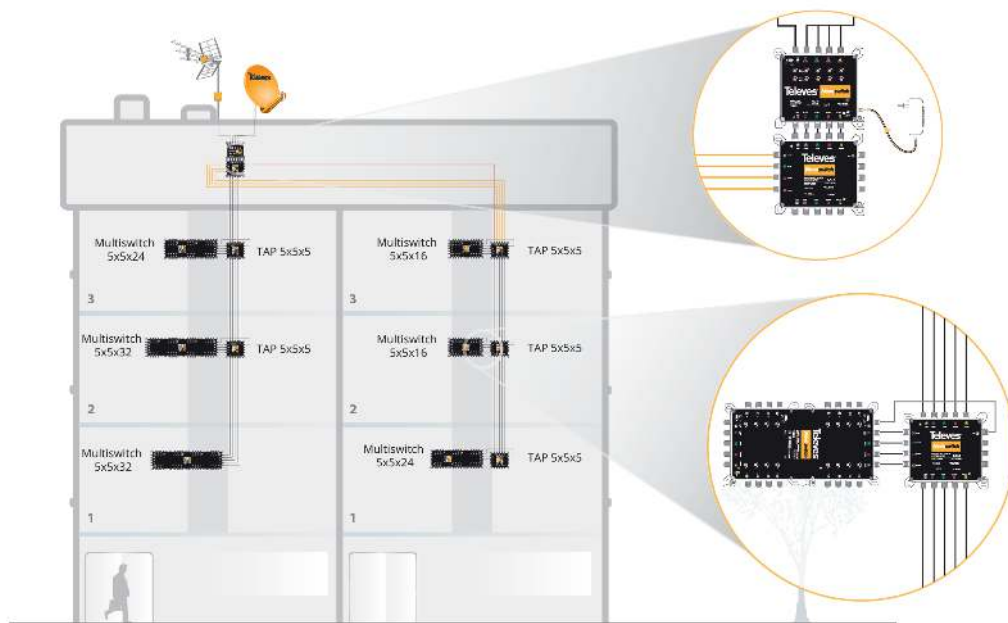
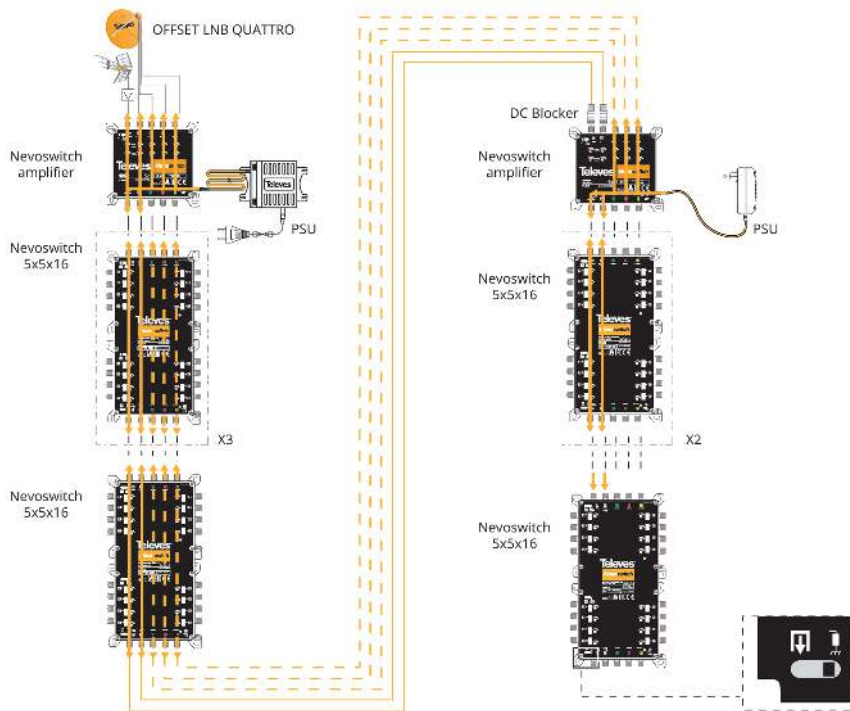
Highlights

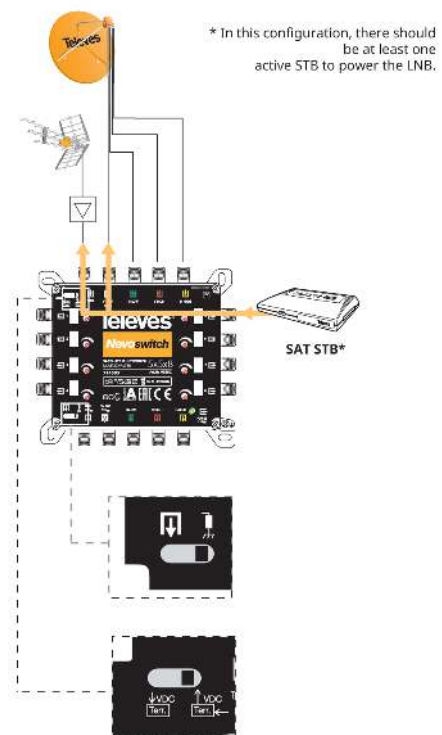
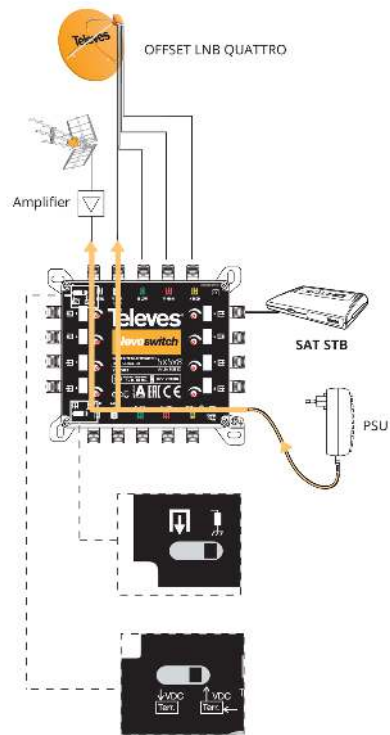
- Very compact
- Made of zamak
- One potentiometer (12 dB) on each of the user outputs to optimize the level on an individual

basis

- A switch for either powering terrestrial pre-amplifiers or allowing current circulation
- Can be powered directly from the satellite receiver, without the need for a power supply unit*
- Remote power feeding using VL
- Current circulation between all inputs and cascades
- Active terrestrial
- Available ECO mode
- Selector switch to shift between cascade and terminal modes
- 12 V power supply
- Low power consumption
- Input and output colour identification
- European design, quality, and manufacturing

Application example





Technical specifications : Ref. 714504

Number of inputs		5
Number of cascable outputs		5
Number of user outputs		12
Frequency range TERR.	MHz	47 ... 862
Frequency range SAT.	MHz	950 ... 2400
Input level TERR.	dBmV	0.092
Input level SAT.	dBmV	0.105
Through losses TERR.	dB	4
Through losses SAT.	dB	3 ... 8
Tap losses 1...8 TERR.	dB	2
Tap losses 1...8 SAT.	dB	1
Tap losses 9...16 TERR.	dB	4
Tap losses 9...16 SAT.	dB	2
Tap regulation range	dB	0 ... 12
Isolation H/V	dB	> 30
Isolation users	dB	> 25
Powering	Vdc	12
Max. current (PSU)	mA	85
Max. current (STB)	mA	35
Operating temperature	°F	23 ... 113
Protection index		20