



NevoSwitch 5 inputs - 16 outputs

When quality matters

Cascadable multiswitch equipped with 5 inputs (one terrestrial, and the four polarities of one satellite), 16 user outputs, and a 12 dB potentiometer per user output.

Can be used as a terminal (star topology) or as a cascade by using a simple switch.

Ref.	714505
Logical ref.	MS516C
EAN13	8424450172827

Packaging info

Box	1 pcs.
-----	--------

Physical data

Net weight	787.00 g
Gross weight	787.00 g
Width	137.00 mm
Height	255.00 mm
Depth	29.00 mm
Main product weight	779.00 g

Highlights

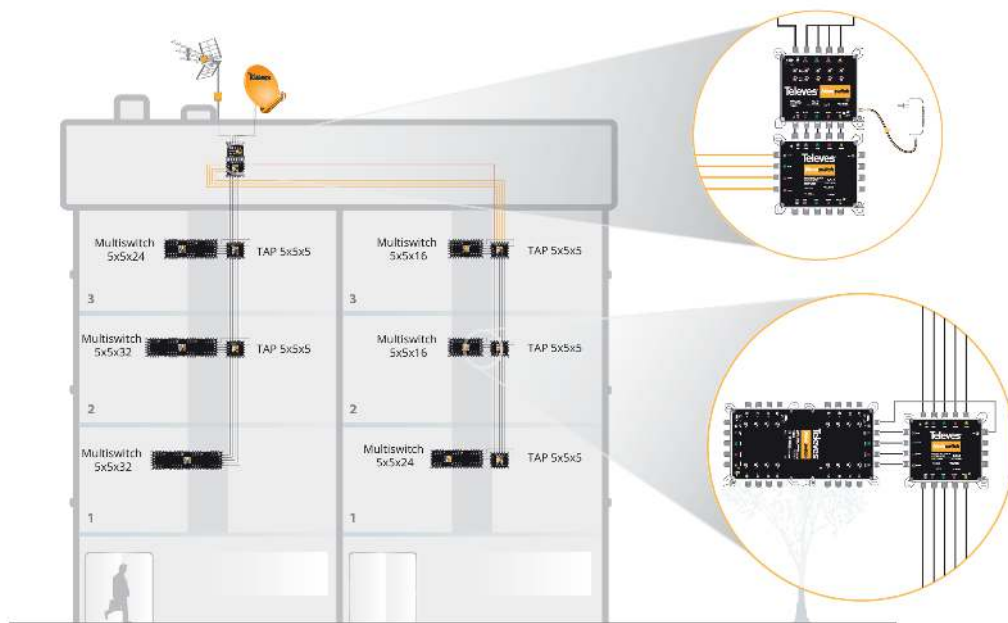
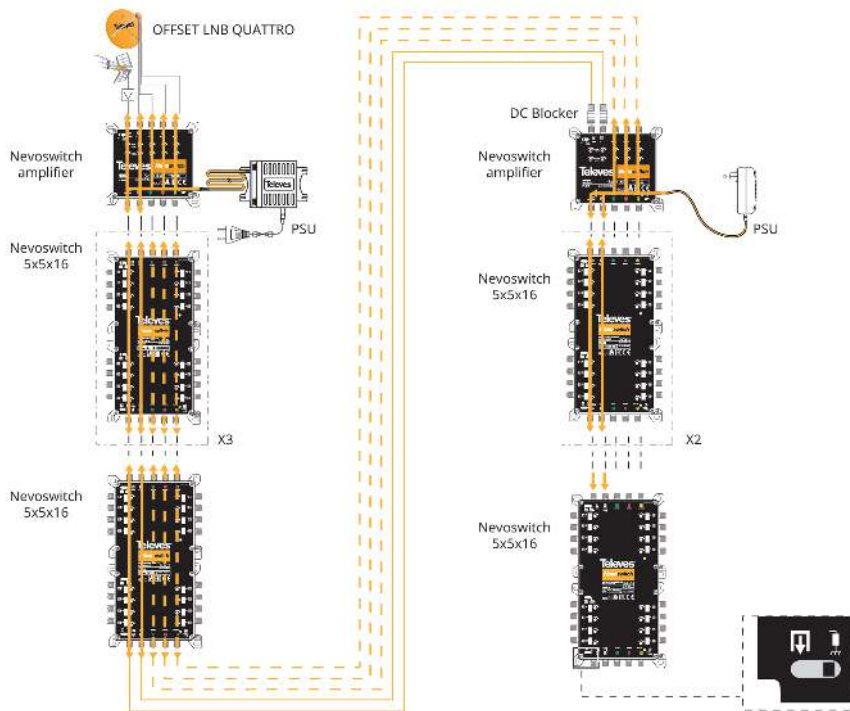
- One potentiometer (12 dB) on each of the user outputs to optimize the level on an individual basis
- A switch for either powering terrestrial pre-amplifiers or allowing current circulation

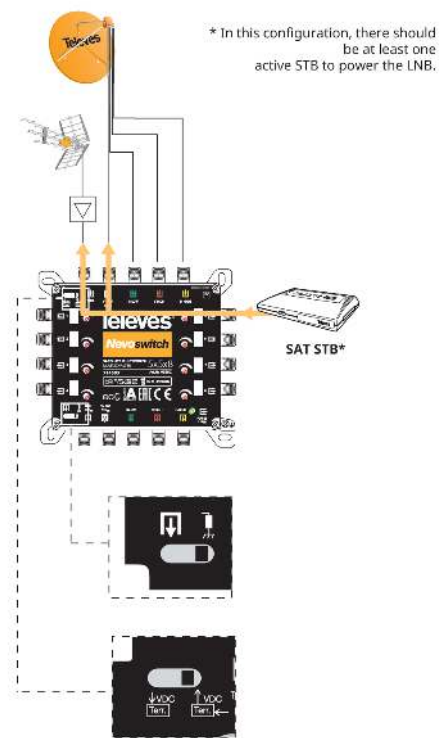
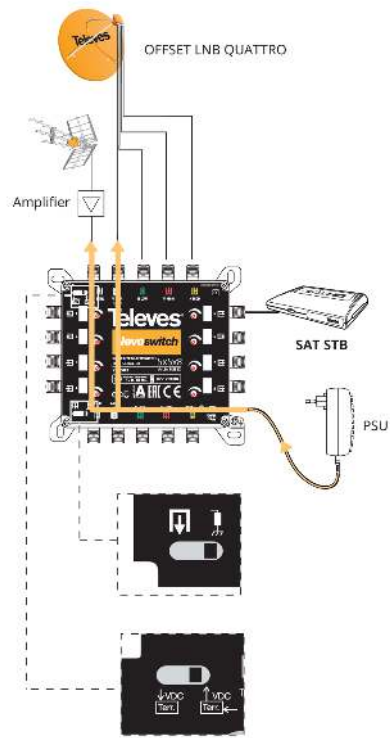
- Can be powered directly from the satellite receiver, without the need for a power supply unit*
- Remote power feeding using VL
- Current circulation between all inputs and cascades
- Active terrestrial
- European design, quality, and manufacturing

Main features

- Very compact
- Made of zamak
- Input and output colour identification
- Available ECO mode
- Selector switch to shift between cascade and terminal modes
- 12 V power supply
- Low power consumption

Application example





Technical specifications : Ref. 714505

Number of inputs		5
Number of cascable outputs		5
Number of user outputs		16
Frequency range TERR.	MHz	47 ... 862
Frequency range SAT.	MHz	950 ... 2400
Input level TERR.	dBµV	92
Input level SAT.	dBµV	105
Through losses TERR.	dB	4
Through losses SAT.	dB	3 ... 8
Tap losses 1...8 TERR.	dB	2
Tap losses 1...8 SAT.	dB	1
Tap losses 9...16 TERR.	dB	4
Tap losses 9...16 SAT.	dB	2
Tap regulation range	dB	0 ... 12
Isolation H/V	dB	> 30
Isolation users	dB	> 25
Powering	Vdc	12
Max. current (PSU)	mA	105
Max. current (STB)	mA	35
Operating temperature	°C	-5 ... 45
Protection index		20