



NevoSwitch 5 inputs - 24 outputs

When quality matters

Cascadable multiswitch equipped with 5 inputs (one terrestrial, and the four polarities of one satellite), 24 user outputs, and a 12 dB potentiometer per user output.

Can be used as a terminal (star topology) or as a cascade by using a simple switch.

Ref.	714506
Logical ref.	MS524C
EAN13	8424450172834

Packaging info

Box	1 pcs.
------------	--------

Physical data

Net weight	1,201.00 g
Gross weight	1,201.00 g
Width	137.00 mm
Height	386.00 mm
Depth	29.00 mm
Main product weight	1,189.00 g

Highlights

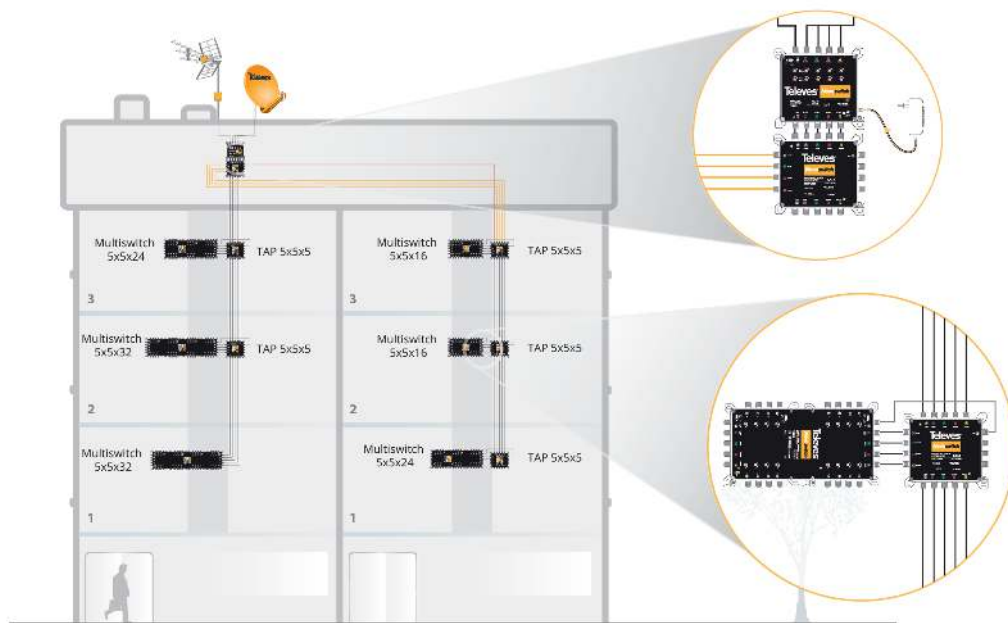
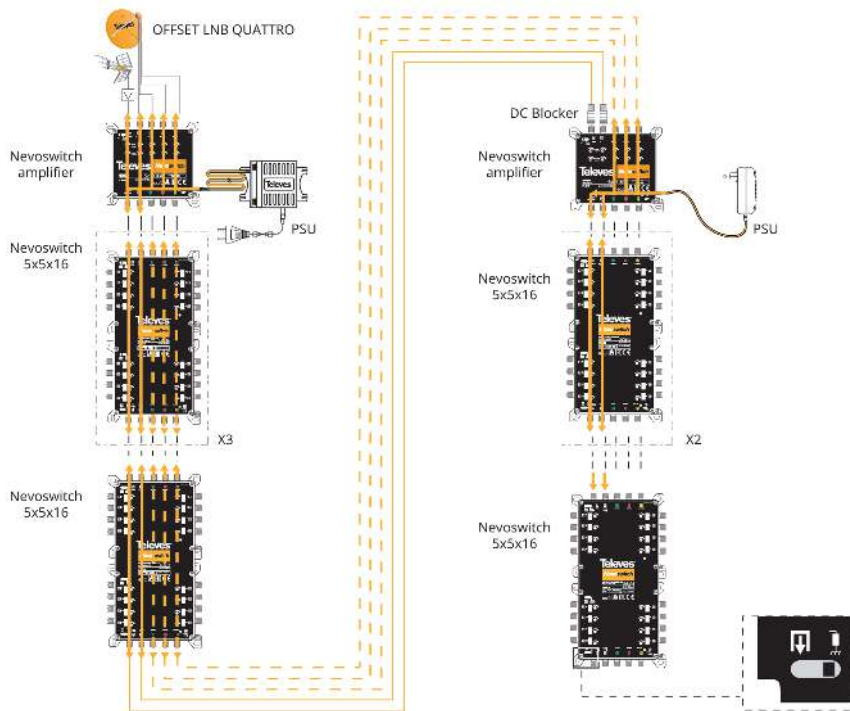
- One potentiometer (12 dB) on each of the user outputs to optimize the level on an individual basis
- A switch for either powering terrestrial pre-amplifiers or allowing current circulation

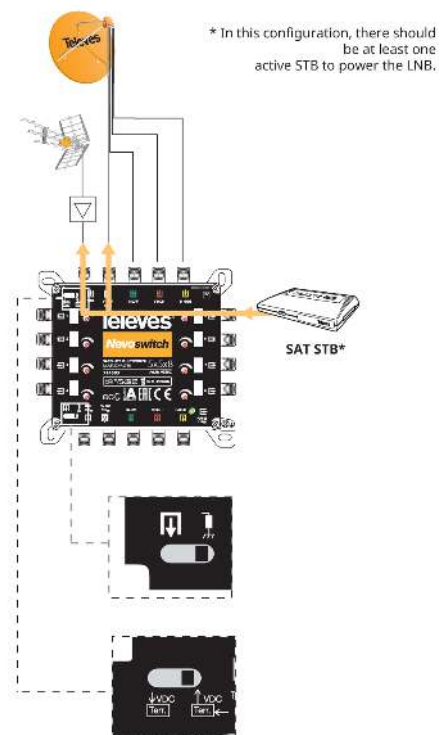
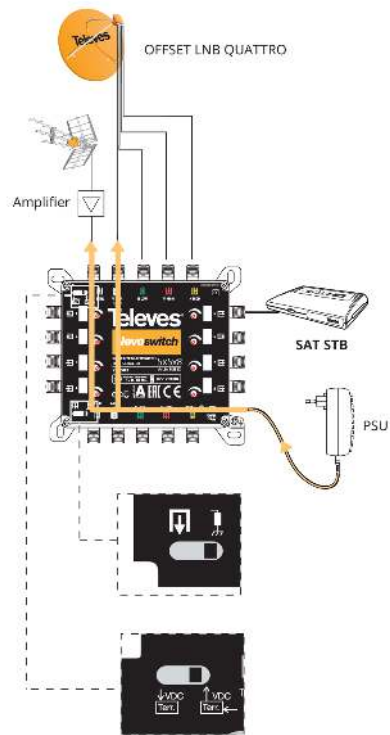
- Can be powered directly from the satellite receiver, without the need for a power supply unit*
- Remote power feeding using VL
- Current circulation between all inputs and cascades
- Active terrestrial
- European design, quality, and manufacturing

Main features

- Very compact
- Made of zamak
- Input and output colour identification
- Available ECO mode
- Selector switch to shift between cascade and terminal modes
- 12 V power supply
- Low power consumption

Application example





Technical specifications : Ref. 714506

Number of inputs		5
Number of cascable outputs		5
Number of user outputs		24
Frequency range TERR.	MHz	47 ... 862
Frequency range SAT.	MHz	950 ... 2400
Input level TERR.	dBµV	92
Input level SAT.	dBµV	105
Through losses TERR.	dB	6
Through losses SAT.	dB	4.5 ... 12
Tap losses 1...8 TERR.	dB	2
Tap losses 1...8 SAT.	dB	1
Tap losses 9...16 TERR.	dB	4
Tap losses 9...16 SAT.	dB	2
Tap losses 17...24 TERR.	dB	6
Tap losses 17...24 SAT.	dB	5
Tap regulation range	dB	0 ... 12
Isolation H/V	dB	> 30
Isolation users	dB	> 25
Powering	Vdc	12
Max. current (PSU)	mA	175
Max. current (STB)	mA	35
Operating temperature	°C	-5 ... 45
Protection index		20