



F.O. Patch Box pre-terminated 2 to 4 SC/APC outputs

Device enabled as a connection point to an optical fiber network. In communications infrastructures, it works as a cut-off and test point for the optical fiber network.

It incorporates optical fiber with one end pre-connectorised on the Patch Box, with 2 SC/APC connectors. This provides the installer with greater convenience and agility in assembly, allowing the fiber to pass through the different conduits to the desired point. The installer only has to do the fusion or connection 2 FO connectors at the connection point.

The design also allows installation in other types of premises (car repair shops, classrooms, work tables, wiring cabinets, etc.) and use as a connection point.

Ref.	231546
Logical ref.	OB4285B
EAN13	8424450286647

Other features

Length	85.00 m
---------------	---------

Packaging info

Bag	1 pcs.
------------	--------

Physical data

Net weight	1,045.00 g
Gross weight	1,060.00 g
Width	230.00 mm
Height	230.00 mm
Depth	60.00 mm

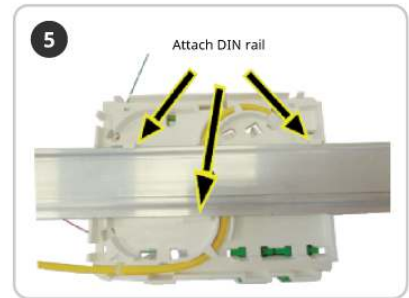
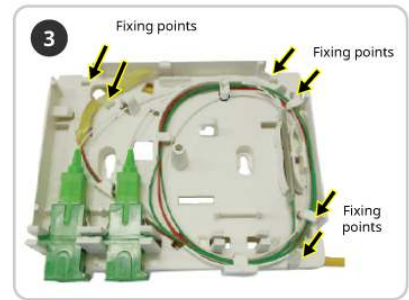
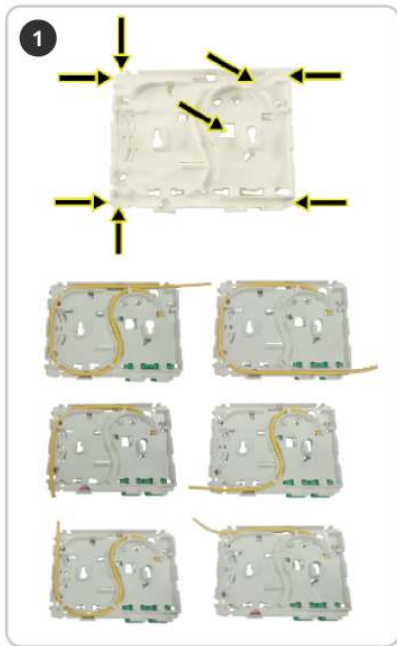
Main product weight	1,045.00 g
----------------------------	------------

Highlights

- Made of robust ABS plastic. White color (RAL 9003)
- With a capacity of up to 4 SC/APC output connectors
- Equipped with ITU-T G657A2 single-mode fibers and Dca-s2,d0,a1 Euroclass
- Equipped with 2 Simplex Single-Mode "SC/APC" female-to-"SC/APC" female adapters (with self-locking cover)
- Multi-anchoring system: Standard DIN rail, wall or outlet
- Single direction of rotation of the fibers inside (which facilitates installation)
- Identifying label
- 6 inputs, pre-cut on its sides, for FO access
- Back input for FO and SC connector
- Pre-cut input at the bottom, for access to a distribution frame (SC/APC)
- Equipped with: 2 heat-shrink sleeves, 2 cable ties, installation screws
- 100% european quality: manufactured by Televes in Spain

Mounting details

1. Select the most suitable entry for the fibre optic hose, maintaining a smoothly curved fibre path.
2. Cut in the cover the appropriate tab to the used entry.
3. Fit the fibre to the PAU, fix it with cable ties at the anchor points and connect it to the adapters.
4. Fix the PAU either to the wall, using the screws supplied, or to DIN by removing the pre-cut tabs on the cover.



Technical specifications : Ref. 231546

Number of fibers		2
Number of inputs		8
Closure type		Cover
Front door locking system		Screw
Type of connections		Connector and fusion splice
Installation type		Wall / Ceiling
Material		ABS Plastic
Thickness	mm	2
Colour		White
Protection index (IP)		30
Protection index (IK)		7
Height	mm	97
Width	mm	119
Depth	mm	33
Fiber core type		Single-mode (ITU-T-G.657.A2)
Euroclass		Dca
Euroclass: Smoke Production		s2
Euroclass: Flaming droplets		d0
Euroclass: Acidity		a1
Fiber core diameter	µm	9
Fiber cladding diameter	µm	125
Coating buffer diameter	µm	250
Cable structure		Tight buffer
Plastic buffer diameter	mm	0.9
Outer sheath Diameter	mm	3.5
Outer sheath Material		LSFH
Blocking jelly		No
Attenuation 1310nm Max	dB/km	0.4
Attenuation 1550nm Max	dB/km	0.3
Attenuation 1490nm Max	dB/km	0.3
Return losses Min	dB	60
Short tension	N	500
Long tension	N	500
Structure reinforcement element		Aramid fibers
Minimum bending radius	mm	15
Operating temperature	°C	-20 ... 70