

## Lower section pivoting, Zinc + Painting 180 tower

3m lower section for the erection of a 180 series tower.

Guy wires are required for pivoting sections.

The section is painted white.

<b>Ref.</b>	303702
<b>EAN13</b>	8424450152416

### Other features

<b>Colour</b>	White
<b>Finishing</b>	Zinc + White painted

### Packaging info

<b>Unit</b>	1 pcs.
-------------	--------

### Physical data

<b>Net weight</b>	12,500.00 g
<b>Gross weight</b>	12,500.00 g
<b>Width</b>	180.00 mm
<b>Height</b>	3,000.00 mm
<b>Depth</b>	165.00 mm
<b>Main product weight</b>	12,796.00 g

### Highlights

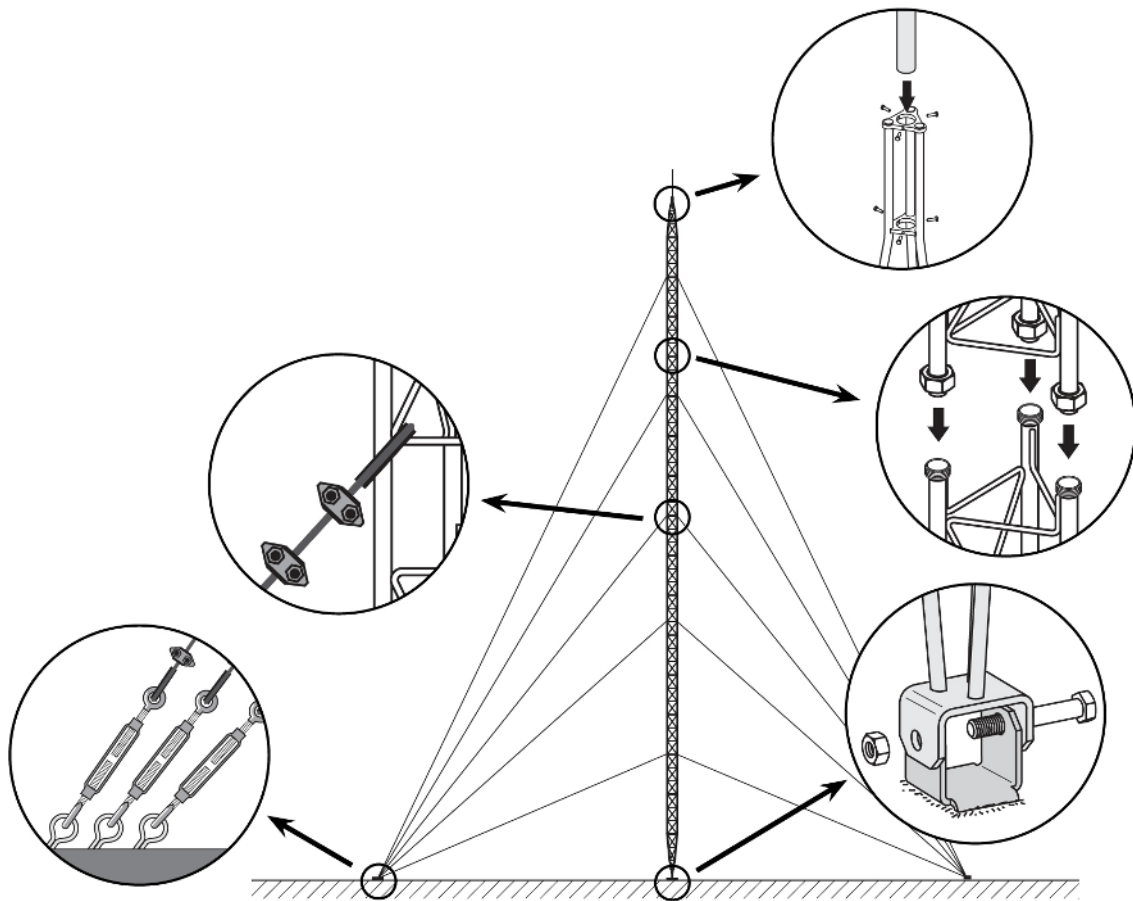
- Anchoring system with union nuts
- Easy and quick mounting
- Fully automated soldering
- 180 tower maximum height: 26.5m (as per calculation conditions)
- Zinc coating + colour paint: oven-lacquering with polyester electrostatic powder

- Main tubes of 20\*2 mm and transverse rods of 6 mm

## Mounting details

---

It consists in fixing the lower section to the base, set it in upright position and levelling it. The subsequent Middle Sections are then mounted, equipped with the appropriate guy wires; the mounting is carried out by climbing on the previously mounted sections and hoisting the new section with the help of the appropriate lifting tools.



## Technical specifications : Ref. 303702

Surface facing the wind	m <sup>2</sup>	0.274
-------------------------	----------------	-------