

Upper section 1m, Zinc + Painting 180 tower

1m upper section for the erection of a 180 SE tower.

The section is painted white.

Ref.	302102
EAN13	8424450155011

Other features

Colour	White
Finishing	Zinc + White painted

Packaging info

Unit	1 pcs.
-------------	--------

Physical data

Net weight	3,366.00 g
Gross weight	3,800.00 g
Width	180.00 mm
Height	995.00 mm
Depth	156.00 mm
Main product weight	3,366.00 g

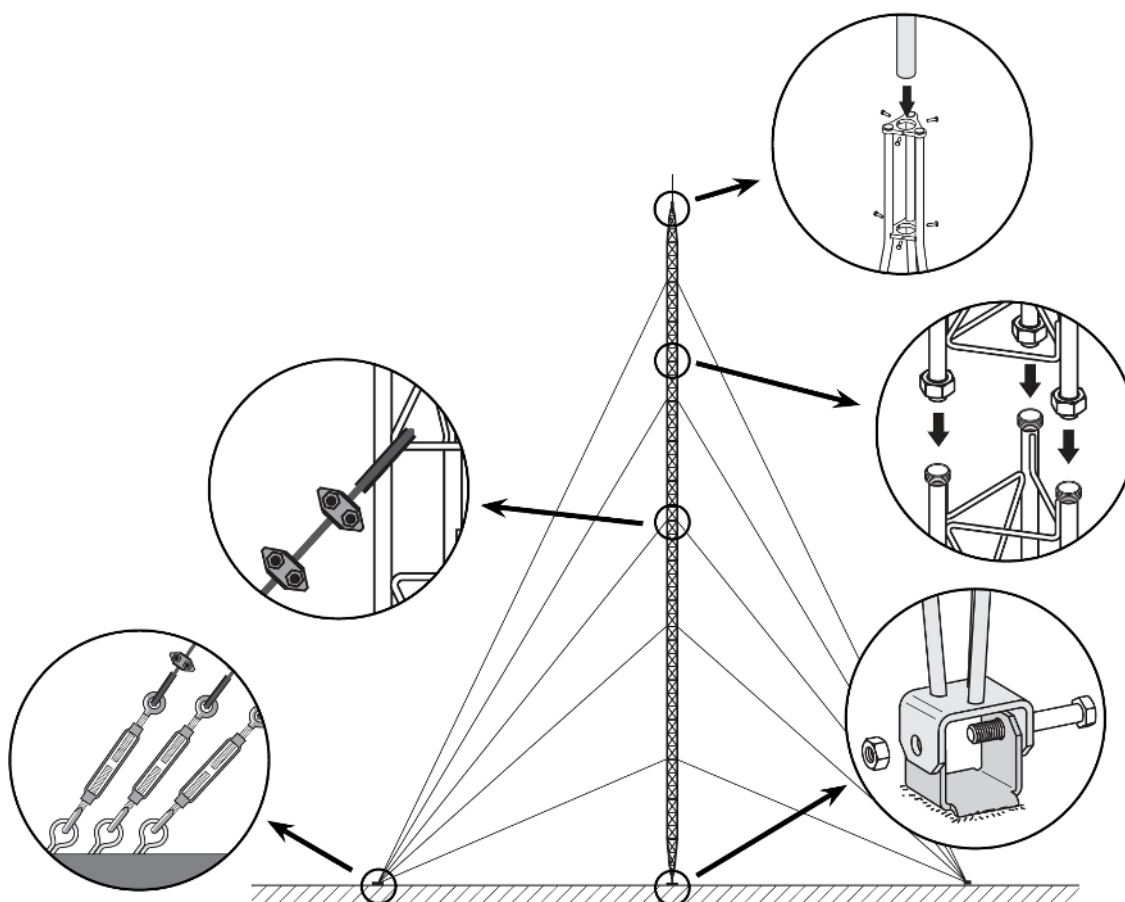
Highlights

- Anchoring system with union nuts
- Easy and quick mounting
- Fully automated soldering
- 180 tower maximum height: 26.5m (as per calculation conditions)
- Zinc coating + colour paint: oven-lacquering with polyester electrostatic powder

- Mast max. diameter: 46 mm
- Main tubes of 20*2 mm and transverse rods of 6 mm

Mounting details

It consists in fixing the lower section to the base, set it in upright position and levelling it. The subsequent Middle Sections are then mounted, equipped with the appropriate guy wires; the mounting is carried out by climbing on the previously mounted sections and hoisting the new section with the help of the appropriate lifting tools.



Technical specifications : Ref. 302102

Surface facing the wind	m ²	0.083
-------------------------	----------------	-------