



## Upper section 1m, Hot-Dip Galvanizing 180 tower

1 m upper section for the erection of a 180 tower.

<b>Ref.</b>	302101
<b>EAN13</b>	8424450321072

### Other features

<b>Colour</b>	Grey
<b>Finishing</b>	Hot-Dip Galvanizing

### Packaging info

<b>Unit</b>	1 pcs.
-------------	--------

### Physical data

<b>Net weight</b>	3,097.00 g
<b>Gross weight</b>	3,492.00 g
<b>Width</b>	160.00 mm
<b>Height</b>	993.00 mm
<b>Depth</b>	138.00 mm
<b>Main product weight</b>	3,097.00 g

### Highlights

- Anchoring system with union nuts
- Easy and quick mounting
- Fully automated soldering
- 180 tower maximum height: 26.5 m (as per calculation conditions)
- The hot-dip galvanizing surface treatment provides enhanced durability in adverse corrosion

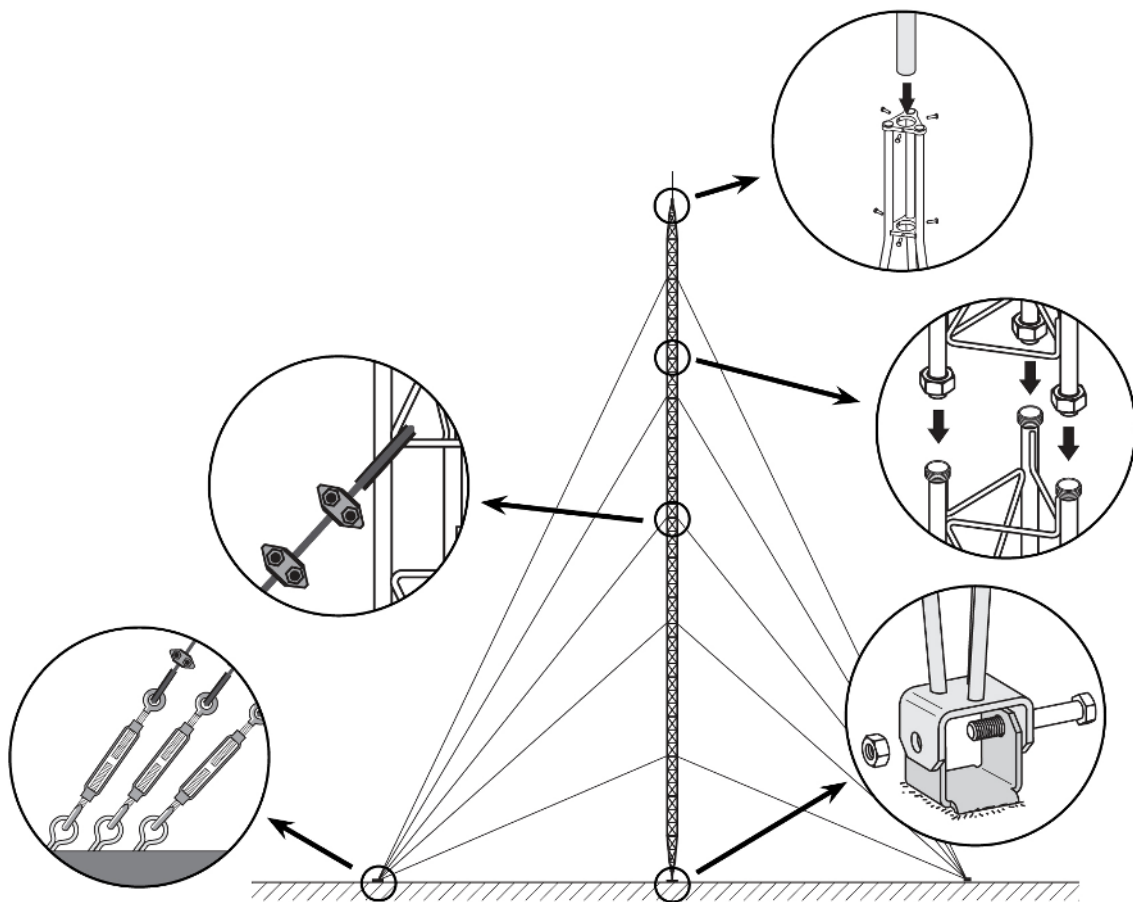
conditions

- Grey finish
- Mast max. diameter: 46 mm
- Main tubes of 20\*2 mm and transverse rods of 6 mm

## Mounting details

---

It consists in fixing the lower section to the base, set it in upright position and levelling it. The subsequent Middle Sections are then mounted, equipped with the appropriate guy wires; the mounting is carried out by climbing on the previously mounted sections and hoisting the new section with the help of the appropriate lifting tools.



## Technical specifications : Ref. 302101

Surface facing the wind	m <sup>2</sup>	0.083
-------------------------	----------------	-------