

## Middle Section, Hot-Dip Galvanizing + Painting 180 tower

3m Middle Section reinforced for the erection of a 180 tower.

<b>Ref.</b>	303104
<b>EAN13</b>	8424450321089

### Other features

<b>Colour</b>	Red
<b>Finishing</b>	Hot-Dip Galvanizing

### Packaging info

<b>Unit</b>	1 pcs.
-------------	--------

### Physical data

<b>Net weight</b>	11,000.00 g
<b>Gross weight</b>	11,000.00 g
<b>Width</b>	160.00 mm
<b>Height</b>	3,000.00 mm
<b>Depth</b>	139.00 mm
<b>Main product weight</b>	11,000.00 g

### Highlights

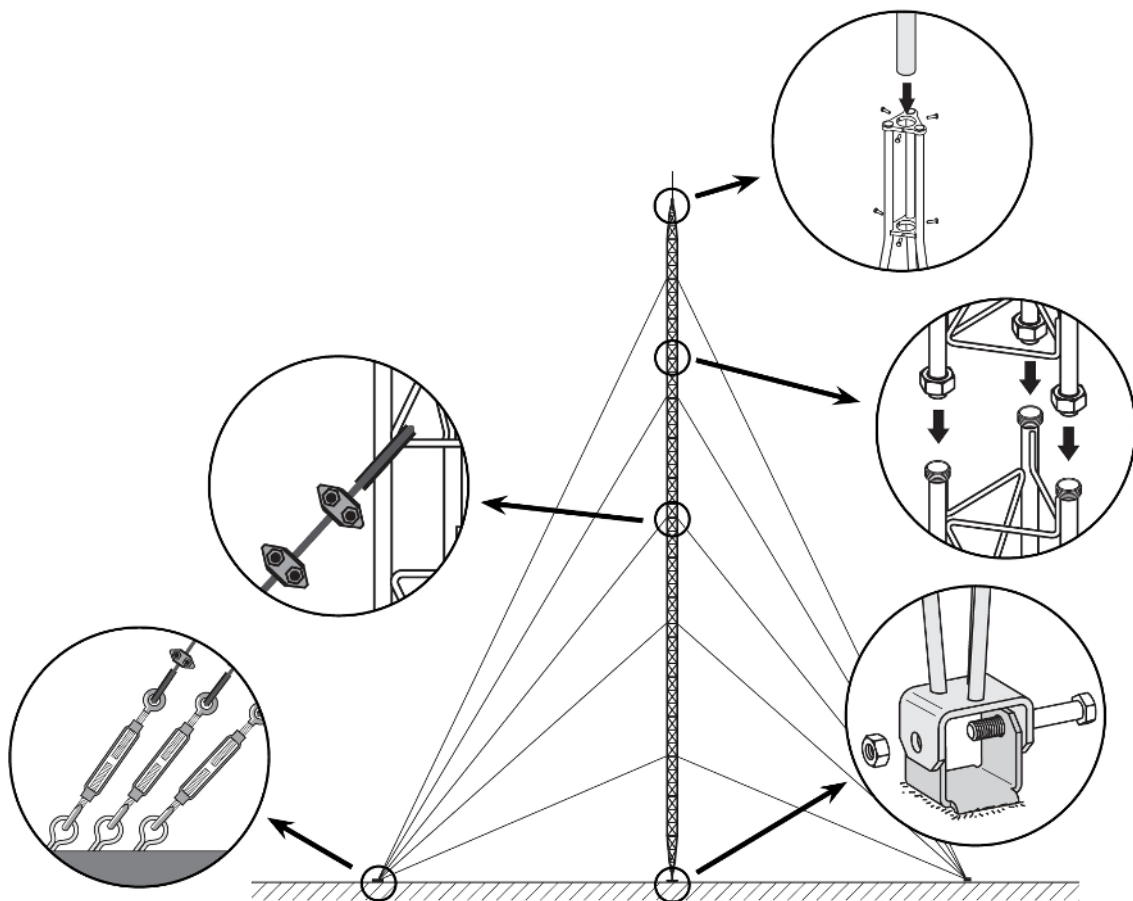
- Anchoring system with union nuts
- Easy and quick mounting
- Fully automated soldering
- 180 tower maximum height: 26.5m (as per calculation conditions)
- The hot-dip galvanizing surface treatment provides enhanced durability in adverse corrosion

conditions

- Colour paint, oven-lacquering with polyester electrostatic powder
- Main tubes of 20\*2 mm and transverse rods of 6 mm

## Mounting details

It consists in fixing the lower section to the base, set it in upright position and levelling it. The subsequent Middle Sections are then mounted, equipped with the appropriate guy wires; the mounting is carried out by climbing on the previously mounted sections and hoisting the new section with the help of the appropriate lifting tools.



## Technical specifications : Ref. 303104

Surface facing the wind	m <sup>2</sup>	0.272
-------------------------	----------------	-------