



ArantiaCast Kit: Chromecast Device with Google TV + Box + Security cable + USB power cable

Seamlessly bring your favourite contents in your mobile device to the hotel's TV

Device installed at the guest room in charge of playing content and managing the app that the user wants to display on the television to which the device is connected.

This ArantiaCast solution dongle allows the guest to stream multimedia content of a variety of Apps from his/her mobile device to the room's TV, as well as to launch entertaining applications directly with Google TV (HD).

Ref.	831418
Logical ref.	ACAST-CCN
EAN13	8424450286913

Packing

Box	1 pcs.
------------	--------

Physical data

Net weight	120.00 g
Gross weight	200.00 g
Width	61.00 mm
Height	77.00 mm

Depth	165.00 mm
Main product weight	120.00 g

Highlights

- The system allows the remote monitoring of the installed devices
- The Chromecast installation on the television sets is carried out in an unobtrusive and safe way
- Streaming and App launching on the Chromecast will only be allowed on the TV of the guest's own room, without access to the other TVs in the hotel
- The system can manage the disconnection of the guests' device in properties with or without PMS
- It includes the option to customise the contents of the Chromecast welcome screen, allowing the hotel to include its own brand in the system. The hotel can also customise the web accessed by the guests during the pairing process with a logo and a background image of their choice
- The system includes a section of usage statistics in the configuration tool, which displays the general statistics of the system since the first recorded event date
- Equipped with a security cable
- It includes a USB power cable for connection to the TV, ensuring proper operation without the need for an external PSU
- Content streaming on the hotel's television set, just like home
- Secure system that guarantees the guests' privacy. It also includes a delete button to clear the credentials of executed applications
- Compatible with television sets equipped with an HDMI connector
- Over 2,000 applications available for Casting
- Multiple mobile devices can be connected to the same room's Chromecast
- Up to 1080p resolution with HDR
- Compatible with iOS mobile devices with version 14.0 or higher
- Compatible with Android mobile devices with version 8.0 or higher

Discover

ARANTIACAST SYSTEM

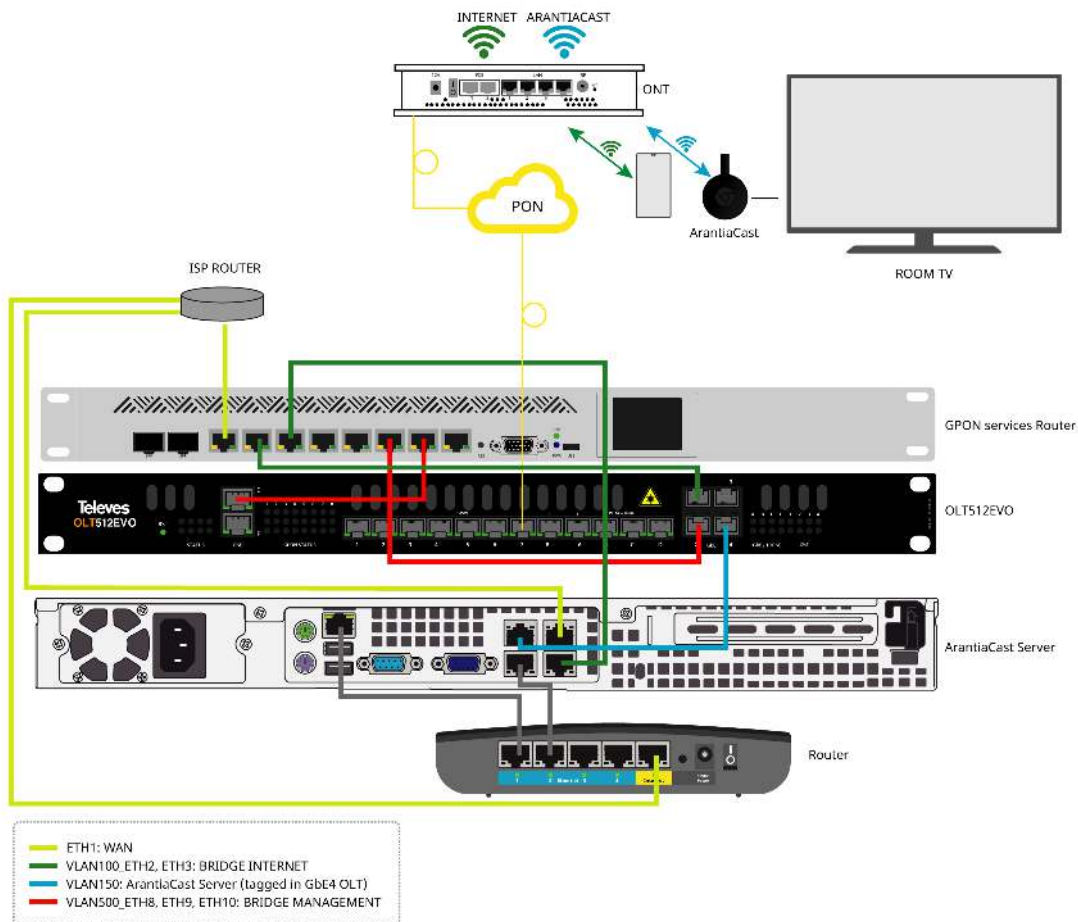
ARANTIACAST is a professional casting solution designed for hospitality environments where there are numerous users and ensuring the guests' privacy should be one of the main concerns for the hotelier. The guests' mobile device can only be paired to the TV in their room and the pairing can be easily achieved just by scanning a QR code on the TV.

The unobtrusive installation does not detract from any aesthetic or functional aspect of the room. It only needs to be integrated in the premises' existing Wi-Fi network. Furthermore, it allows network remote monitoring and provides an outstanding added value to the hotel.

DIFFERENCES BETWEEN ARANTIACAST AND MIRRORING

ARANTIACAST	MIRRORING
The contents of an application are transferred to a different device	The image displayed on an application transferred to a different device
Both devices can run different applications	The same screen is displayed on both devices
The device to which the application is transferred only displays the application's execution	All the content displayed on the portable device is displayed on the second device's screen
Multitasking: the mobile device can run other applications	No multitasking: all the actions performed on the mobile device are displayed on the secondary device
The mobile device's screen can be disabled, left idle	Should the screen of the mobile device turn black, so would the screen of the secondary device
Not all apps are compatible	Everything can be displayed on the screen of the secondary device
Compatible with iOS & Android mobile devices	Compatibility with different platforms is not guaranteed

Application example



Functionalities

Content customization

ArantiaCast adapts to image and brand of the establishment



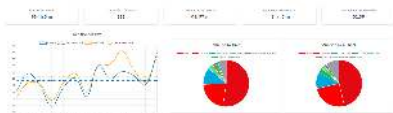
With this functionality it is possible to customize the welcome screen of the ArantiaCast service. The administrator can define the logo, the background image and the content that will be displayed on the screen when the guest access the service, contributing to enhance the establishment's own brand.

In order to complete this user experience, there is also the option to customize the web address that guests access during the pairing

process of their devices, both with a characteristic logo and a background image chosen by the establishment itself.

System usage reports

Detailed summary of each connection




Within the ArantiaCast administration tool we can find a complete section of system usage reports. In it, the administrator will be able to consult the general statistics of the system since the date of the first recorded event: total duration of all casting sessions, total number of casting sessions carried out, average duration of each casting session, average daily casting time and average daily number of casting sessions.

The administrator can obtain specific information thanks to the to sort statistics by room, start date and end date, as well as the option to display three charts: Daily chart, App use by time and App use by number.

To obtain raw and complete information, the tool offers the possibility of exporting the data displayed on the screen both in PDF format (where the screen shown on the server is replicated) and in CSV (in which the relevant statistics and data are captured and used to create reports and graphs).

Remote management and monitoring of installed devices

Installation under control

The image shows a screenshot of a table with multiple columns and rows. The columns include device identifiers, names, room numbers, and status indicators. There are also icons for each device, possibly representing signal strength or connection status.

To simplify the tasks of monitoring and error detection in the ArantiaCast system, there is an option to check the status of each of the Chromecast devices, displaying information on the coverage level and the signal quality. It is also possible to restart and change the name of the devices, as well as set the deletion of linked devices at a specific time or at check out.

PMS integration

Processes automation to simplify management tasks



The ArantiaCast system integrates with the most widely used PMS on the market, contributing to automate the processes related to the guests' stay, such as defining a specific communication language or performing an automatic checkout without the need for interaction.

Services

Stream your favourite content



The system allows the content streaming from the user's personal device straight to the TV by following these three easy steps:

1. Connect to the Hotel Wi-Fi
2. Scan the QR code or, failing that, visit the established web address and enter the corresponding code
3. Tap the casting icon in your cast-enabled app and enjoy!

Enjoy a multitude of entertainment options



ArantiaCast represents the perfect solution for the user's entertainment, with more than 2,000 applications available. Enjoy a wide variety of content such as series, movies, music, news, sports, etc. as if you were at home.

Check the applications available for Casting at the web address: chromecast.com/apps*. Android and iOS compatible.

(*). Some entertainment apps require logging in directly through the Chromecast with Google TV (HD).

Guests' privacy guaranteed



The system guarantees the guests' privacy, so the streaming will only be allowed on the TV of the guest's room, without login or personal information.

It can manage the disconnection of the guests' device at the time of check out. In addition, it presents an unobtrusive and secure installation, which only needs to be integrated in the premises' existing Wi-Fi network.

Technical specifications : Ref. 831418

Resolution		1080p
Video format		HDR10 / HDR10+ / HLG
Audio format		Dolby Atmos / Dolby Digital / Dolby Digital Plus
Wi-Fi		Yes
Bluetooth		Yes
WiFi frequency band		2.4 GHz / 5 GHz
USB port		USB Type-C
Display port		HDMI
PSU output voltage	Vdc	5
Max PSU output current	A	1.5